

LOCATIONS

CORPORATE HEADQUARTERS
222 S. HARBOR BLVD. SUITE 700
ANAHEIM, CA 92805
TEL: 714-782-3060
FAX: 714-782-7052

WEST COAST DISTRIBUTION
12197 DAVIS STREET
MORENO VALLEY, CA 92557
TEL: 800-946-9412
FAX: 714-782-7075

ACCOUNTS SERVICES/
ORDER DESK
TEL: 800-946-9412
FAX: 714-782-7075
orders@greenball.com

EAST COAST
DISTRIBUTION CENTER
4300 HUNTER ROAD
ATLANTA, GA 30349
TEL: 800-946-9412

WARRANTIES/RETURNS
TEL: 866-767-9637
FAX: 714-782-7074



GREENBALL®

TIRES FOR THE ROAD, WORK, AND PLAY



www.greenballtires.com

CATALOG **2023**

NEW



OVERLAND RTX

FOR THE ULTIMATE BALANCE
OF DRIVABILITY AND OFF-ROAD CAPABILITIES
(See pg. 2)



CREATE YOUR OWN PATH

TABLE OF CONTENTS

LIGHT TRUCK RADIAL	2-15
SPECIAL TRAILER RADIAL	16-18
SPECIAL TRAILER BIAS	18-19
SPECIAL TRAILER BIAS LPT.....	20
BIAS TRAILER ASSEMBLIES	20
STEEL TRAILER WHEELS	21
LAWN AND GARDEN	22-24
GOLF CART	25-26
GOLF CART TIRE AND WHEEL ASSEMBLIES	27
ATV/UTV TIRES	28-47



GREENBALL®

TIRES FOR THE ROAD, WORK, AND PLAY



www.greenballtires.com



KANATI®

OVERLAND RTX

FOR THE ULTIMATE BALANCE OF DRIVABILITY AND OFF-ROAD CAPABILITIES

The Kanati Overland RTX was created for drivers of pickup trucks, CUVs, full-size SUVs, and jeeps who enjoy off-road adventures yet desire a smooth and comfortable ride on the highway. With over a decade of research and experience behind the Overland's optimized construction and reformulated rubber compound, it's Kanati's most advanced and best-performing tire to date. The Overland's multi-directional sipes are designed to boost traction and grip in both wet and dry conditions. An aggressive sidewall design offers extra biting edges when needed while adding an off-road curb appeal to your vehicle. At the same time, the balanced void ratio and open shoulder blocks provide reliable self-cleaning power to protect the tire's core from damage without sacrificing rider comfort.



Wheel Diameter	Part Number	Size	Ply Rating	Tread Depth	Overall Diameter	Section Width	Rim Width	Weight	PSI	Load Index/Speed Rating	Load Capacity Single/Dual
				32nd/Inch	Inches	Inches	Inches	Lbs.	Lbs.		Lbs.
20	LOR2033125E	33X12.50R20LT	10PR/LRE	18	32.9	12.4	10	61.1	80	114Q	2600
	LOR2035125E	35X12.50R20LT	10PR/LRE	18	34.8	12.6	10	67.4	80	121Q	3195
	LOR2037125E	37X12.50R20LT	10PR/LRE	18	36.9	12.8	10	73.6	80	126Q	3750
	LOR2037135E	37X13.50R20LT	10PR/LRE	18	36.7	13.6	11	76.8	80	127Q	3860
22	LOR2233125E	33X12.50R22LT	10PR/LRE	18	32.9	12.2	10	60.7	80	109Q	2270
	LOR2235125E	35X12.50R22LT	10PR/LRE	18	34.8	12.4	10	66.8	80	117Q	2835
	LOR2237125E	37X12.50R22LT	10PR/LRE	18	36.8	12.5	10	74.1	80	123Q	3415
	LOR2237135E	37X13.50R22LT	10PR/LRE	18	36.8	13.6	11	76.9	80	123Q	3415

COMING SOON

Wheel Diameter	Part Number	Size	Ply Rating	Tread Depth	Overall Diameter	Section Width	Rim Width	Weight	PSI	Load Index/Speed Rating	Load Capacity Single/Dual
				32nd/Inch	Inches	Inches	Inches	Lbs.	Lbs.		Lbs.
16	LOR1624575E	LT245/75R16	10PR/LRE	16	30.8	9.9 on 7	6-8	TBA	80	120/116Q	3042/2778
17	LOR1726565E	LT265/65R17	10PR/LRE	16	30.6	10.7 on 8	8-9.5	TBA	80	120/117Q	3085/2835
	LOR1726565C	LT265/65R17	6PR/LRC	16	30.6	10.7 on 8	5.5-7	TBA	50	109/105Q	2270/2040
	LOR1728570E	LT285/70R17	10PR/LRE	16	32.8	11.5 on 8.5	7.5-9.5	TBA	80	123/120Q	3465/3120
	LOR1728570C	LT285/70R17	6PR/LRC	16	32.8	11.5 on 8.5	7.5-9.5	TBA	50	116/113Q	2755/2535
	LOR1735125C	35x12.50R17LT	6PR/LRC	18.9	34.7	12.8 on 10	8-10.5	TBA	35	111Q	2405
	LOR1735125E	35x12.50R17LT	10PR/LRE	18.9	34.7	12.8 on 10	8-10.5	TBA	80	121Q	3195
	LOR1737125E	37x12.50R17LT	10PR/LRE	18.9	36.7	13.1 on 10	8-10.5	TBA	80	124Q	3525
	LOR1737125C	37x12.50R17LT	6PR/LRC	18.9	36.7	13.1 on 10	8-10.5	TBA	35	116Q	2755
18	LOR1826560E	LT265/60R18	10PR/LRE	16	30.8	10.4 on 8	8-9.5	TBA	80	119/116Q	3000/2755
20	LOR2027555E	LT275/55R20	10PR/LRE	16	31.9	11.1 on 8.5	8-9.5	TBA	80	120/117Q	3085/2835

- **ADVANCED RUBBER COMPOUND**
KANATI'S MOST ADVANCED RUBBER COMPOUND TO DATE PROVIDES LONG-LASTING EVEN WEAR
- **MULTI-DIRECTIONAL SIPES**
FOR EXCELLENT TRACTION IN WET AND DRY CONDITIONS
- **MULTI-ANGLED TREAD BLOCK DESIGN**
ENGINEERED FOR LOWER ROAD NOISE AND IMPROVED TRACTION
- **BALANCED VOID RATIO**
PROVIDES SELF-CLEANING POWER TO PROTECT TIRE FROM DAMAGE, WHILE PROMOTING A QUIET RIDE
- **REINFORCED SIDEWALL CONSTRUCTION**
PROVIDES SUPERIOR PUNCTURE RESISTANCE

STREET PERFORMANCE

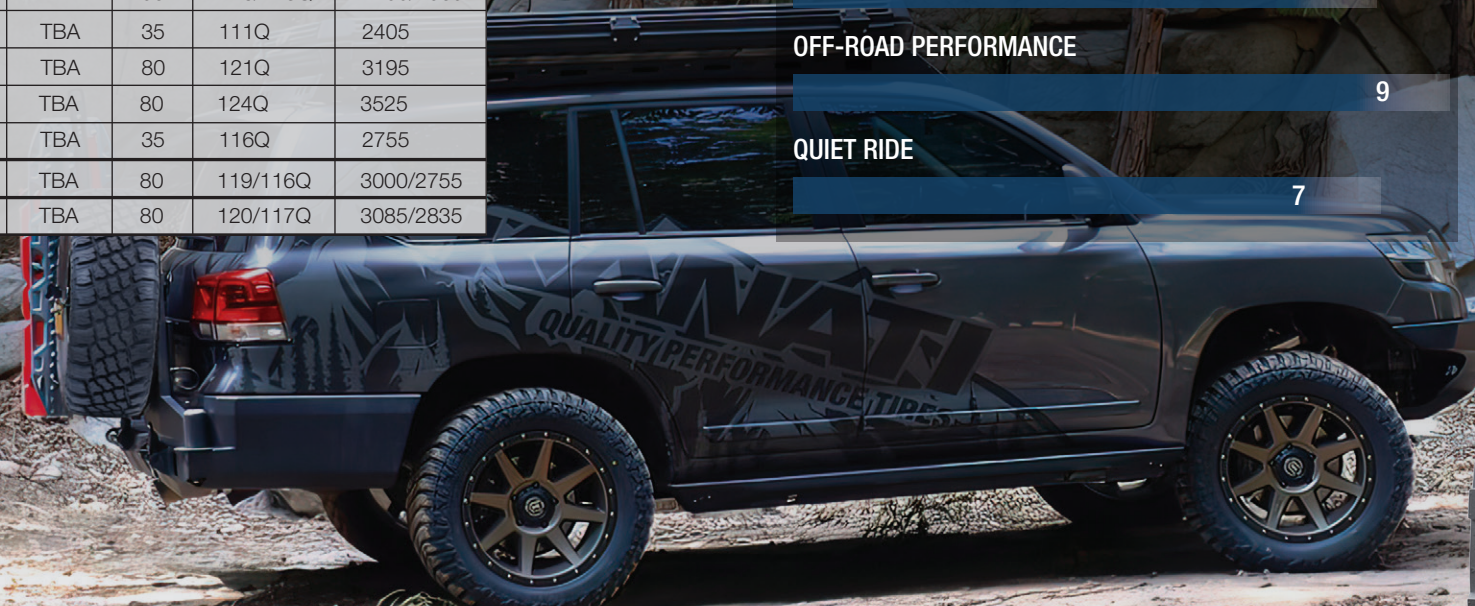
7

OFF-ROAD PERFORMANCE

9

QUIET RIDE

7





KANATI®

TERRA COMMANDER RTX

STREET PERFORMANCE
RUGGED OFF-ROAD LOOK

The Terra Commander RTX is the perfect companion for drivers who want a tire that can comfortably cruise the open highway and navigate light off-road conditions. The tread design of the Terra Commander features closely placed lugs that allow for greater contact on the road for a smooth ride and less road noise. Stone ejectors between the lugs help remove stubborn rocks and other debris, while the siped lugs provide extra flex and grip when adventuring off the beaten path. Combined with its broad shoulders and aggressive sidewall, the RTX gives your vehicle a rugged off-road look that others will envy. This new Kanati tire is more than capable of getting you through your daily excursions and back; all you have to do is decide which direction to travel.



Wheel Diameter	Part Number	Size	Ply Rating	Tread Depth	Overall Diameter	Section Width	Rim Width	Weight	PSI	Load Index/Speed Rating	Load Capacity Single/Dual
				32nd/Inch	Inches	Inches	Inches	Lbs.	Lbs.		Lbs.
17	LRX1723580E	LT235/80R17	10PR/LRE	16.1	31.7	8.9	6-(6.5)-7.5	47.2	80	120/117Q	3085/2835
	LRX1724570E	LT245/70R17	10PR/LRE	16.1	30.6	9.8	6.5-(7)-8	45.9	80	119/116Q	3000/2755
	LRX1724575E	LT245/75R17	10PR/LRE	16.1	31.5	9.5	6.5-(7)-7.5	48.0	80	121/118Q	3195/2910
	LRX1726570E	LT265/70R17	10PR/LRE	16.1	31.7	10.3	7-(8)-8.5	50.9.0	80	121/118Q	3195/2910
	LRX1728570E	LT285/70R17	10PR/LRE	16.1	32.9	11.1	7.5-(8.5)-9	55.8	80	121/118Q	3195/2910
	LRX1729570E	LT295/70R17	10PR/LRE	16.1	33.3	11.5	7.5-(8.5)10	59.5	80	121/118Q	3195/2910
	LRX1730570E	LT305/70R17	10PR/LRE	16.1	33.9	12	8-(9)-9.5	61.2	80	121/118Q	3195/2910
	LRX1731570E	LT315/70R17	10PR/LRE	16.1	34.4	12.9	8(9.5)-11	65.8	80	121/118Q	3195/2910
	LRX1733125E	33X12.50R17LT	10PR/LRE	18.4	32.8	12.5	8.5-(10)-11	62.3	80	120Q	3085
	LRX1735125E	35X12.50R17LT	10PR/LRE	18.4	34.8	12.7	8.5-(10)-11	68.9	80	121Q	3195
	LRX1737125E	37X12.50R17LT	10PR/LRE	18.4	36.9	13	8.5-(10)-11	74.6	80	124Q	3525
LRX1740135D*	40X13.50R17LT	8PR/LRD	18.9	39.5	13.6	9-(11)-11.5	TBA	50	128Q	3195	
18	LRX1826570E	LT265/70R18	10PR/LRE	16.1	32.6	10.3	7-(8)-9	53.5	80	124/121Q	3525/3195
	LRX1827565E	LT275/65R18	10PR/LRE	16.1	32.1	10.5	7.5-(8)-9	53.9	80	123/120Q	3415/3085
	LRX1827570E	LT275/70R18	10PR/LRE	16.1	33.1	11.0	7-(8)-9	56.5	80	125/122Q	3640/3305
	LRX1828570E	LT285/70R18	10PR/LRE	16.1	33.8	11.1	7.5-(8.5)-9.5	58.3	80	127/124Q	3860/3525
	LRX1829570E	LT295/70R18	10PR/LRE	16.1	34.3	11.6	8-(8.5)-10	63.8	80	129/126Q	4080/3750
	LRX1830570E	LT305/70R18	10PR/LRE	16.15	34.9	12.2	8.5-(9)-10	63.88	80	126/123Q	3750/3415
	LRX1835125E	35X12.50R18LT	10PR/LRE	18.4	34.7	12.6	8.5-(10)-11	68.5	80	123Q	3415
	LRX1837125E	37X12.50R18LT	10PR/LRE	18.4	36.9	12.7	8.5-(10)-11	73.2	80	128Q	3970
20	LRX2026560E	LT265/60R20	10PR/LRE	16.1	32.5	10.2	7.5-(8)-9.5	53.9	80	121/118Q	3195/2910
	LRX2027560E	LT275/60R20	10PR/LRE	16.1	33.1	10.4	7.5-(8)-9.5	55.2	80	123/120Q	3415/3085
	LRX2027565E	LT275/65R20	10PR/LRE	16.1	34.1	10.5	7.5-(8)-9.5	58.3	80	126/123Q	3750/3415
	LRX2028560E	LT285/60R20	10PR/LRE	16.1	33.5	11.1	8-(8.5)-10	59.4	80	125/122Q	3640/3305
	LRX2029560E	LT295/60R20	10PR/LRE	16.1	34.2	11.2	9-(8.5)-10	60.4	80	126/123Q	3750/3415
	LRX2032560E	LT325/60R20	10PR/LRE	16.1	35.3	13.0	9-(9.5)-12	67.5	80	126/123Q	3750/3415
	LRX2033125E	33X12.50R20LT	10PR/LRE	18.4	32.8	11.8	8.5-(10)-11	60.6	80	114Q	2600
	LRX2035125E	35X12.50R20LT	10PR/LRE	18.4	34.8	12.1	8.5-(10)-11	67.9	80	121Q	3195
	LRX2037125E	37X12.50R20LT	10PR/LRE	18.4	36.9	12.4	8.5-(10)-11	73.6	80	126Q	3750
LRX2040135E*	40X13.50R20LT	10PR/LRE	18.9	39.5	13.6	9-(11)-11.5	TBA	65	128Q	3970	

■ **OPTIMIZED VOID RATIO**
FOR A COMFORTABLE RIDE AND LOW NOISE

■ **3-PLY SIDEWALLS**
FOR ADDED STRENGTH AND STABILITY

■ **AGGRESSIVE SIDEWALL AND SHOULDER LUGS**
FOR A RUGGED OFF-ROAD LOOK

■ **STONE EJECTORS**
PROVIDE EASY CLEAN-OUT BETWEEN LUGS

■ **M+S RATED**

STREET PERFORMANCE

8

OFF-ROAD PERFORMANCE

7

QUIET RIDE

8

*Coming Soon



KANATI®

COMMANDANT ATX

SUPERIOR TRACTION &
HEAVY-DUTY LOAD CAPACITY

The Kanati Commandant ATX is a perfect daily driver for light and heavy duty trucks or large SUVs. The Commandant has an aggressive tread pattern and bold shoulder lugs designed to boost a truck's appeal and aesthetics while providing traction and increased handling in various terrains and conditions.

The Commandant's design was rooted in our Armor Hog ATX tire, which supports HD pickups and heavy-duty applications; However, the Commandant is lighter than the Armor Hog and still offers a high load capacity at a reduced weight. The Commandant ATX provides drivers with a smooth and quiet ride, all while delivering the carrying capacity to pull harder and go further on or off the road.



Wheel Diameter	Part Number	Size	Ply Rating	Tread Depth	Overall Diameter	Section Width	Rim Width	Weight	PSI	Load Index/Speed Rating	Load Capacity Single/Dual
				32nd/Inch	Inches	Inches	Inches	Lbs.	Lbs.		Lbs.
17	LCO1723580F	LT235/80R17	12PR/LRF	18	31.9	9.2 ON 6.5	6-7.5	52.64	95	123/120Q	3415/3085
	LCO1724570F	LT245/70R17	12PR/LRF	18	30.7	9.7 ON 7	6.5-8	52.30	95	122/119Q	3305/3000
	LCO1724575F	LT245/75R17	12PR/LRF	18	31.6	9.7 ON 7	6.5-7.5	54.65	95	124/121Q	3525/3195
	LCO1726570F	LT265/70R17	12PR/LRF	18	31.8	10.7 ON 8	7-8.5	56.99	95	126/123Q	3750/3415
	LCO1728570F	LT285/70R17	12PR/LRF	18	32.9	11.5 ON 8.5	7.5-9	62.37	95	129/126Q	4080/3750
	LCO1729570F	LT295/70R17	12PR/LRF	18	33.4	11.7 ON 8.5	7.5-10	64.54	95	129/126Q	4080/3750
	LCO1730570F	LT305/70R17	12PR/LRF	18	34.0	12.2 ON 9	8-9.5	67.37	80	129/126Q	4080/3750
	LCO1731570F	LT315/70R17	12PR/LRF	18	34.5	12.7 ON 9.5	8-11	70.42	80	129/126Q	4080/3750
	LCO1733125F	33X12.50R17LT	12PR/LRF	18	32.7	12.5 ON 10	8.5-11	65.17	80	124Q	3525
	LCO1735125F	35X12.50R17LT	12PR/LRF	18	34.7	12.5 ON 10	8.5-11	71.08	80	129Q	4080
LCO1737125F	37X12.50R17LT	12PR/LRF	18	36.7	12.5 ON 10	8.5-11	79.12	80	129Q	4080	
18	LCO1826570F	LT265/70R18	12PR/LRF	18	32.7	10.7 ON 8	7-9	60.86	95	127/124Q	3860/3525
	LCO1827565F	LT275/65R18	12PR/LRF	18	32.2	10.9 ON 8	7.5-9	59.37	95	127/124Q	3860/3525
	LCO1827570F	LT275/70R18	12PR/LRF	18	33.3	10.9 ON 8	7-9	62.77	95	129/126Q	4080/3750
	LCO1828570F	LT285/70R18	12PR/LRF	18	33.9	11.5 ON 8.5	7.5-9.5	66.85	95	129/126Q	4080/3750
	LCO1829570F	LT295/70R18	12PR/LRF	18	34.4	11.7 ON 8.5	8-10	69.14	95	129/126Q	4080/3750
	LCO1830570F	LT305/70R18	12PR/LRF	18	35.0	12.2 ON 9	8.5-10	71.50	80	129/126Q	4080/3750
	LCO1835125F	35X12.50R18LT	12PR/LRF	18	34.7	12.5 ON 10	8.5-11	71.67	80	128Q	3970
LCO1837125F	37X12.50R18LT	12PR/LRF	18	36.7	12.5 ON 10	8.5-11	77.70	80	128Q	3970	
20	LCO2026560F	LT265/60R20	12PR/LRF	18	32.7	10.7 ON 8	7.5-9.5	59.99	95	125/122Q	3640/3305
	LCO2027555F	LT275/55R20	12PR/LRF	18	33.3	10.8 ON 8.5	8.5	57.6	95	124/121Q	3525
	LCO2027560F	LT275/60R20	12PR/LRF	18	33.3	10.9 ON 8	7.5-9.5	61.59	95	127/124Q	3860/3525
	LCO2027565F	LT275/65R20	12PR/LRF	18	34.3	10.9 ON 8	7.5-9.5	64.16	95	129/126Q	4080/3750
	LCO2028560F	LT285/60R20	12PR/LRF	18	33.8	11.5 ON 8.5	8-10	66.08	95	129/126Q	4080/3750
	LCO2029560F	LT295/60R20	12PR/LRF	18	34.3	11.7 ON 8.5	8-10	68.80	95	129/126Q	4080/3750
	LCO2032560F	LT325/60R20	12PR/LRF	18	35.4	13 ON 9.5	9-12	76.47	80	129/126Q	4080/3750
	LCO2033125F	33X12.50R20LT	12PR/LRF	18	32.7	12.5 ON 10	8.5-11	66.17	80	119Q	3000
	LCO2035125F	35X12.50R20LT	12PR/LRF	18	34.7	12.5 ON 10	8.5-11	71.14	80	125Q	3640
	LCO2037125F	37X12.50R20LT	12PR/LRF	18	36.7	12.5 ON 10	8.5-11	77.48	80	128Q	3970
LCO2040135E	40X13.5R20LT	12PR/LRF	18	39.7	13.6 ON 11	9-11.5	TBA	80	129Q	4080	

■ 12-PLY RATED RADIAL CONSTRUCTION FOR GREATER LOAD CARRYING-CAPACITY

■ 3-PLY SIDEWALL FOR SUPERIOR PUNCTURE AND IMPACT RESISTANCE

■ AGGRESSIVE ALL-TERRAIN TREAD FOR SUPERIOR TRACTION ON MULTIPLE TERRAINS

■ ENGINEERED FOR HEAVY OR LIGHT DUTY TRUCKS AND LARGE 6-8 PASSENGER SUVs

■ QUIET AND SMOOTH RUNNING, PERFECT FOR YOUR DAILY DRIVER

■ M+S RATED

STREET PERFORMANCE

7

OFF-ROAD PERFORMANCE

8

QUIET RIDE

7



MUD HOG M/T

DESIGNED FOR OFF-ROAD PERFORMANCE

The Kanati Mud Hog M/T sports an aggressive tread pattern ready to take on mother nature. Whether its conquering mud or crawling over rocks, the Mud Hog is engineered to push the limits of your off-road adventure. You can confidently dominate any terrain with the Mud Hog's large void ratio for easy clean-out and wide footprint for superior traction and stopping power.



Wheel Diameter	Part Number	Size	Ply Rating	Tread Depth	Overall Diameter	Section Width	Rim Width	Weight	PSI	Load Index/Speed Rating	Load Capacity Single/Dual
				32nd/Inch	Inches	Inches	Inches	Lbs.	Lbs.		Lbs.
15	L1531105C-252*	31X10.50R15LT	6PR/LRC	19	30.7	10.9 on 8.5	7-9	47.5	50	109Q	2270
	L1535105C-252*	LT35X10.50R15	6PR/LRC	20	34.7	10.5 on 8	10	62.0	50	118Q	2910
	L1535125C-252*	35X12.50R15LT	6PR/LRC	20	34.8	12.5 on 10	8.5-11	62.1	35	113Q	2535
16	L1623585E-252	LT235/85R16	10PR/LRE	18	32.0	9.3 on 6.5	6-7.5	50.9	80	120/116Q	3042/2778
	L1624575E-252	LT245/75R16	10PR/LRE	18	30.7	9.8 on 7	6.5-8	49.9	80	120/116Q	3042/2778
	L1626575E-252	LT265/75R16	10PR/LRE	18	31.9	10.5 on 7.5	7-8	54.2	80	123/120Q	3415/3085
	LH1628575E-252	LT285/75R16	10PR/LRE	19	33.0	11.3 on 8	7.5-9	60.1	80	126/123Q	3750/3415
	LH1630570E-252	LT305/70R16	10PR/LRE	20	33.1	12.2 on 9	8-9.5	64.8	65	124/121Q	3525/3195
	L1631575D-252*	LT315/75R16	8PR/LRD	20	34.8	12.3 on 8.5	8-11	63.7	50	121/118Q	3195/2910
17	L1726570C-252**	LT265/70R17	6PR/LRC	TBA	TBA	TBA	7-9	TBA	50	112/109Q	2470/2270
	L1726570E-252	LT265/70R17	10PR/LRE	18	31.9	10.7 on 8	7-8.5	54.2	80	121/118Q	3195/2910
	L1728570C-252**	LT285/70R17	6PR/LRC	TBA	TBA	TBA	7.5-9.5	TBA	50	116/113Q	2755/2535
	L1728570E-252	LT285/70R17	10PR/LRE	19	33.0	11.5 on 8.5	7.5-9	61.3	80	123/120Q	3465/3120
	L1729570C-252**	LT295/70R17	6PR/LRC	TBA	TBA	TBA	7.5-10	TBA	50	118/115Q	2910/2680
	L1729570E-252	LT295/70R17	10PR/LRE	19.7	33.5	11.8 on 8.5	7.5-10	60.9	80	121/118Q	3195
	L1730570E-252	LT305/70R17	10PR/LRE	19.7	34.1	12.3 on 9	8-9.5	65	80	121/118Q	3195
	L1731570C-252**	LT315/70R17	6PR/LRC	TBA	TBA	TBA	8-10.5	TBA	35	113/110Q	2535/2335
	L1731570E-252	LT315/70R17	10PR/LRE	19.7	34.6	12.7 on 9.5	8-11	65.6	80	121/118Q	3195
	L1733125C-252**	33X12.50R17LT	6PR/LRC	TBA	TBA	TBA	8.5-11	TBA	35	105Q	2040
	L1733125E-252	33X12.50R17LT	10PR/LRE	19	32.8	12.5 on 10	8.5-11	59.9	80	120Q	3085
	L1735125C-252**	35X12.50R17LT	6PR/LRC	TBA	TBA	TBA	8.5-10.5	TBA	35	111Q	2405
	L1735125E-252	35X12.50R17LT	10PR/LRE	20	34.8	12.5 on 10	8.5-11	64.3	80	121Q	3195
	L1737125C-252**	37X12.50R17LT	6PR/LRC	TBA	TBA	TBA	8-10.5	TBA	35	116Q	2755
L1737125E-252	37X12.50R17LT	10PR/LRE	19	36.8	12.5 on 10	8.5-11	72.8	80	124Q	3525	
L1739125E-252	39X12.50R17LT	10PR/LRE	21	38.8	12.8 on 10	8.5-11	85.0	65	128Q	3970	
L1740135D-252**	40X13.50R17LT	8PR/LRD	21	39.7	13.6 on 11	9-11.5	TBA	50	121Q	3195	
18	L1827565E-252	LT275/65R18	10PR/LRE	20	32.3	11.0 on 8	7.5-9	57.0	80	123/120Q	3415/3085
	L1827570E-252	LT275/70R18	10PR/LRE	19	33.4	10.9 on 8	7-8.5	59.0	80	125/122Q	3640/3305
	LH1830570E-252	LT305/70R18	10PR/LRE	20	35.1	12.2 on 9	8-10	67.4	80	126/123Q	3750/3415
	L1833125E-252	33X12.50R18LT	10PR/LRE	20	32.6	12.6 on 10	10	62.2	80	118Q	2910
	L1835125E-252	35X12.50R18LT	10PR/LRE	20	34.8	12.6 on 10	10	67.1	80	123Q	3415

Wheel Diameter	Part Number	Size	Ply Rating	Tread Depth	Overall Diameter	Section Width	Rim Width	Weight	PSI	Load Index/Speed Rating	Load Capacity Single/Dual
				32nd/Inch	Inches	Inches	Inches	Lbs.	Lbs.		Lbs.
20	L2027560E-252	LT275/60R20	10PR/LRE	20	33.0	11 on 8	9	59.1	80	123/120Q	3415/3085
	L2027565E-252	LT275/65R20	10PR/LRE	19	34.3	11 on 8	7.5-9.5	60.0	80	126/123Q	3750/3415
	L2029560E-252	LT295/60R20	10PR/LRE	20	34.0	12 on 8.5	8-10	66.1	80	126/123Q	3750/3415
	L2033125E-252	33X12.50R20LT	10PR/LRE	19	32.7	12.5 on 10	8.5-11	61.4	80	114Q	2600
	L2035125E-252	35X12.50R20LT	10PR/LRE	20	35.0	12.5 on 8.5	8.5-11	66.6	80	121Q	3195
	L2037125E-252	37X12.50R20LT	10PR/LRE	20	37.0	12.5 on 10	8.5-11	71.5	80	126Q	3750
	L2039135E-252	39X13.50R20LT	10PR/LRE	21	38.8	13.6 on 11	8.5-11	83.8	65	128Q	3970
L2040135E-252**	40X13.50R20LT	10PR/LRE	21	39.7	13.6 on 11	9-11.5	TBA	65	128Q	3970	
22	L2233125E-252	33X12.50R22LT	10PR/LRE	20	32.8	12.5 on 10	8.5-11	60.3	80	109Q	2270
	L2235125E-252	35X12.50R22LT	10PR/LRE	20	34.7	12.5 on 10	8.5-11	66.2	80	117Q	2835
	L2237135E-252	37X13.50R22LT	10PR/LRE	20	36.8	13.6 on 11	8.5-11	75.0	80	123Q	3415
	L2239145E-252	39X14.50R22LT	10PR/LRE	21	38.8	14.6 on 12	10-12	87.0	65	128Q	3970

- **AGGRESSIVE ANGLED TREAD**
DELIVERS ENHANCED TRACTION IN OFF-ROAD CONDITIONS
- **3-PLY SIDEWALLS**
FOR INCREASED STRENGTH AND IMPACT RESISTANCE
- **OPTIMIZED VOID RATIO**
FOR SUPERIOR SELF-CLEANING ACTION
- **BUILT WITH RESILIENT RUBBER COMPOUNDS**
FOR EVEN TREAD WEAR AND DURABILITY

■ **M+S RATED**

STREET PERFORMANCE

6

OFF-ROAD PERFORMANCE

10

QUIET RIDE

5

*2-ply sidewall construction **Coming Soon



KANATI® TRAIL HOG A/T-4

ALL-TERRAIN / ALL-WEATHER SUPERIOR TRACTION

The Kanati Trail Hog A/T-4 is a true all-season tire featuring an all-terrain tread that can handle all types of weather and road conditions. From rocky terrains to snowy paths to wooded trails, the Trail Hog provides excellent traction and responsiveness for all your off-road and overland adventures. Its heavily siped lugs and rugged beveled shoulder blocks deliver extra biting edges for enhanced steering and control. In addition, the Trail Hog A/T-4 is mountain snowflake rated and compatible with #16 winter studs for added traction in severe snow conditions.



Wheel Diameter	Part Number	Size	Ply Rating	Tread Depth	Overall Diameter	Section Width	Rim Width	Weight	PSI	Load Index/Speed Rating	Load Capacity Single/Dual
				32nd/Inch	Inches	Inches	Inches	Lbs.	Lbs.		Lbs.
16	LTH1626575E	LT265/75R16	10PR/LRE	18	31.8	10.7 on 7.5	7-8	52.3	80	123/120Q	3415/3085
	LTH1628575E	LT285/75R16	10PR/LRE	18	32.9	11.5 on 8.0	7.5 - 9.0	52.3	80	126/123Q	3750/3415
17	LTH1723580E	LT235/80R17	10PR/LRE	18	31.9	9.2 on 6.5	6-7.5	48.2	80	120/117Q	3085/2835
	LTH1724570E	LT245/70R17	10PR/LRE	18	30.6	9.8 on 7	6.5-8.0	47.4	80	119/116Q	3000/2755
	LTH1724575E	LT245/75R17	10PR/LRE	18	31.6	9.8 on 7	6.5-7.5	49.2	80	121/118Q	3195/2910
	LTH1726570E	LT265/70R17	10PR/LRE	18	31.7	10.6 on 8	7-8.5	52.1	80	121/118Q	3195/2910
	LTH1728570E	LT285/70R17	10PR/LRE	18	32.8	11.5 on 8.5	7.5-9	57.0	80	123/120Q	3465/3120
	LTH1730570E	LT305/70R17	10PR/LRE	18	34.0	12.3 on 9	8-9.5	63.3	80	121/118Q	3195/2910
	LTH1731570E	LT315/70R17	10PR/LRE	18	34.5	12.7 on 9.5	8-9.5	65.4	80	121/118Q	3195/2910
	LTH1735125E	35X12.50R17LT	10PR/LRE	18	34.6	12.8 on 10	8.5-11	64.5	80	121Q	3195
18	LTH1737125E	37X12.50R17LT	10PR/LRE	18	36.7	13.0 on 10	8.5-11	72.5	80	124Q	3525
	LTH1826570E	LT265/70R18	10PR/LRE	18	32.7	10.7 on 8	7-9	54.3	80	124/121Q	3525/3195
	LTH1827565E	LT275/65R18	10PR/LRE	18	32.3	10.9 on 8	7.5-9	55.0	80	123/120Q	3415/3085
	LTH1827570E	LT275/70R18	10PR/LRE	18	33.4	10.9 on 8	7-8.5	57.3	80	125/122Q	3640/3305
	LTH1830570E	LT305/70R18	10PR/LRE	18	34.9	12.4 on 9	8.5-10	67.1	80	126/123Q	3750/3415
20	LTH1837125E	37X12.50R18LT	10PR/LRE	18	36.7	12.9 on 10	8.5-11	72.1	80	128Q	3970
	LTH2026560E	LT265/60R20	10PR/LRE	18	32.5	10.7 on 8	7.5-9.5	55.2	80	121/118Q	3195/2910
	LTH2027555E	LT275/55R20	10PR/LRE	18	32.0	11.2 on 8.5	7.5-9.5	55.5	80	120/117Q	3085/2835
	LTH2027560E	LT275/60R20	10PR/LRE	18	33.0	11 on 8	7.5-9.5	57.1	80	123/120Q	3415/3085
	LTH2027565E	LT275/65R20	10PR/LRE	18	34.3	10.8 on 8	7.5-9.5	59.2	80	126/123Q	3750/3415
	LTH2028560E	LT285/60R20	10PR/LRE	18	33.5	11.5 on 8.5	8-10	59.8	80	125/122Q	3640/3305
	LTH2030555E	LT305/55R20	10PR/LRE	18	33.3	12.4 on 9.5	8.5-10	63.4	80	121/118Q	3195/2910
	LTH2032560E	LT325/60R20	10PR/LRE	18	35.4	13.1 on 9.5	9-12	71.2	80	126/123Q	3750/3415
20	LTH2035125E	35X12.50R20LT	10PR/LRE	18	34.7	12.5 on 10	8.5-11	66.6	80	121Q	3195
	LTH2037125E	37X12.50R20LT	10PR/LRE	18	36.7	12.7 on 10	8.5-11	71.3	80	126Q	3750

■ SNOW FLAKE RATED / #16 STUDS FOR GREATER TRACTION IN WINTER CONDITIONS



■ TOUGH 3-PLY SIDEWALL CONSTRUCTION FOR DURABILITY

■ AGGRESSIVE TREAD DESIGN FOR SUPERIOR TRACTION AND CONTROL

■ OPTIMIZED VOID RATIO FOR SMOOTH AND QUIET RIDE

STREET PERFORMANCE

6

OFF-ROAD PERFORMANCE

8

QUIET RIDE

6



KANATI® NAVPOINT HTX®

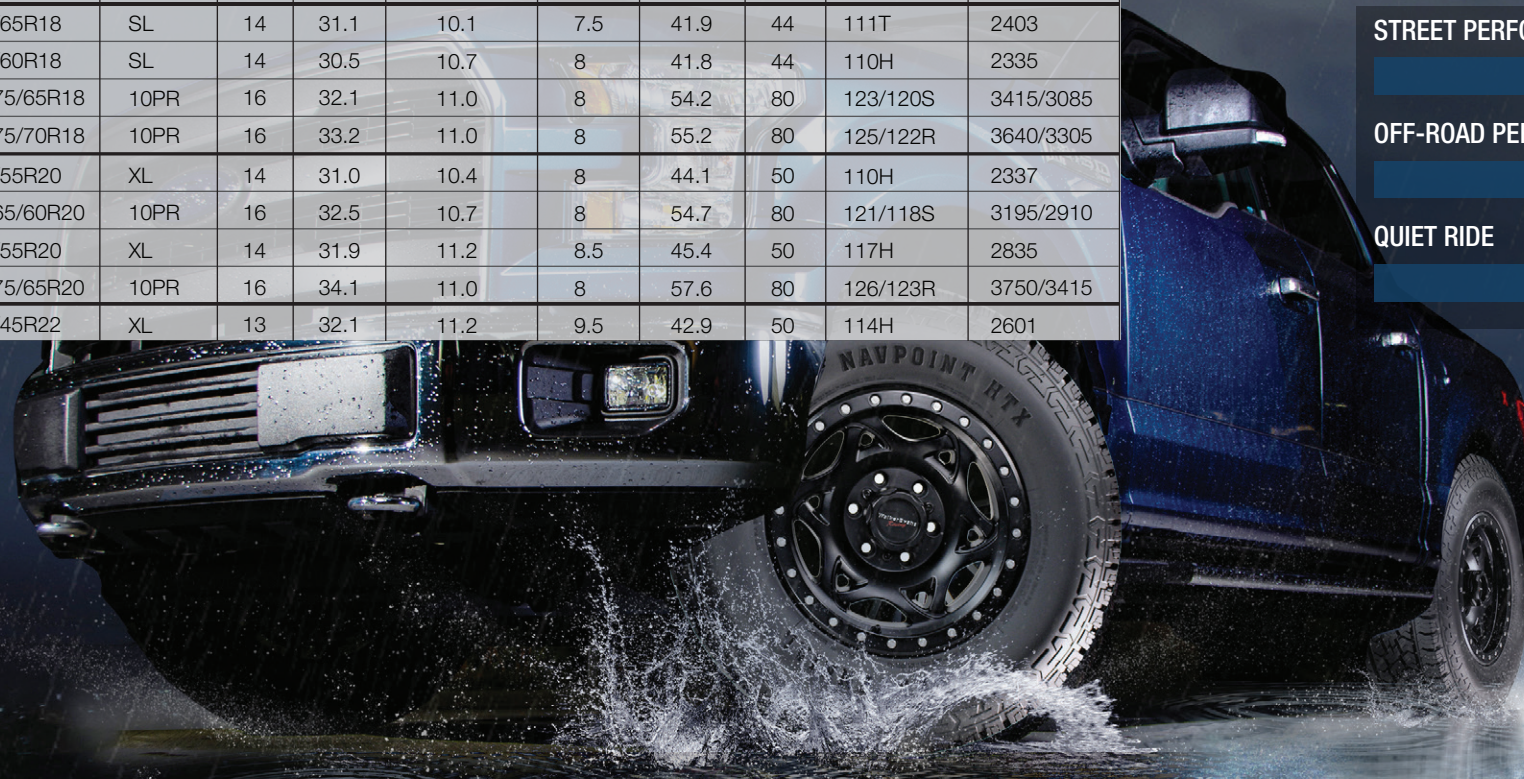
ALL-SEASON HIGHWAY PERFORMANCE

The new Kanati Navpoint HTX is a superior all-season highway-terrain tire made for light trucks, SUVs, and CUVs. With performance siping built in, the Navpoint HTX delivers extra flex and biting edges for enhanced grip and improved handling in adverse weather conditions. Two large circumferential grooves help expel water for increased traction on wet surfaces. Suitable for everyday driving and long-distance travel, the Navpoint HTX provides a smooth ride, excellent traction, and greater responsiveness in a variety of driving conditions.



Wheel Diameter	Part Number	Size	Ply Rating	Tread Depth	Overall Diameter	Section Width	Rim Width	Weight	PSI	Load Index/Speed Rating	Load Capacity Single/Dual
				32nd/Inch	Inches	Inches	Inches	Lbs.	Lbs.		Lbs.
16	LNV1622575E	LT225/75R16	10PR	16	29.3	8.8	6	40.2	80	115/112Q	2680/2470
	LNV1623585E	LT235/85R16	10PR	16	31.7	9.3	6.5	45.7	80	120/116R	3042/2756
	LNV1624575E	LT245/75R16	10PR	16	30.5	9.8	7	43.9	80	120/116S	3042/2756
	LNV1626575E	LT265/75R16	10PR	16	31.7	10.5	7.5	49.2	80	123/120R	3415/3085
	LNV1628575E	LT285/75R16	10PR	16	32.8	11.3	8	54.6	80	126/123R	3750/3415
17	LNV1723580E	LT235/80R17	10PR	16	31.8	9.3	6.5	45.9	80	120/117R	3085/2835
	LNV1724570E	LT245/70R17	10PR	16	30.6	9.8	7	45.0	80	119/116R	3000/2756
	LNV1724575E	LT245/75R17	10PR	16	31.5	9.8	7	46.20	80	121/118S	3195/2910
	LNV1725570SL	P255/70R17	SL	14	31.1	10.2	7.5	40.9	44	110T	2337
	LNV1726570E	LT265/70R17	10PR	16	31.7	10.7	8	49.6	80	121/118S	3195/2910
LNV1728570E	LT285/70R17	10PR	16	32.8	11.5	8.5	55.8	80	121/118S	3195/2910	
18	LNV1825565SL	255/65R18	SL	14	31.1	10.1	7.5	41.9	44	111T	2403
	LNV1826560SL	265/60R18	SL	14	30.5	10.7	8	41.8	44	110H	2335
	LNV1827565E	LT275/65R18	10PR	16	32.1	11.0	8	54.2	80	123/120S	3415/3085
	LNV1827570E	LT275/70R18	10PR	16	33.2	11.0	8	55.2	80	125/122R	3640/3305
20	LNV2025555XL	255/55R20	XL	14	31.0	10.4	8	44.1	50	110H	2337
	LNV2026560E	LT265/60R20	10PR	16	32.5	10.7	8	54.7	80	121/118S	3195/2910
	LNV2027555XL	275/55R20	XL	14	31.9	11.2	8.5	45.4	50	117H	2835
	LNV2027565E	LT275/65R20	10PR	16	34.1	11.0	8	57.6	80	126/123R	3750/3415
22	LNV2228545XL	285/45R22	XL	13	32.1	11.2	9.5	42.9	50	114H	2601

- **CIRCUMFERENTIAL GROOVES**
FOR IMPROVED WATER EXPULSION
- **AGGRESSIVE CENTER TREAD**
FOR INCREASED TRACTION IN ADVERSE CONDITIONS
- **MULTIPLE ANGLED GROOVES**
FOR ENHANCED TRACTION IN WATER OR SNOW
- **CLOSED SHOULDER DESIGN**
FOR RELIABLE HANDLING AND GREATER STABILITY





DIRT COMMANDER M/T

BUILT TOUGH FOR ANY DESTINATION

The Dirt Commander M/T is a quality mud-terrain tire featuring an aggressive tread for optimum traction in various rough terrains. Its rugged lugs are strategically laid out to give you a wide stance for greater stability, and the broad shoulder lugs provide extra protection and biting force to conquer challenging obstacles. With an optimized void ratio, the Dirt Commander M/T performs well on and off the road. Available in 24 popular sizes to fit pickup trucks, jeeps, and SUVs.



Wheel Diameter	Item	Size	Ply Rating	Tread Depth	Overall Diameter	Section Width	Rim Width	Weight	PSI	Load Index/Speed Rating	Load Capacity
				32nd/Inch	Inches	Inches	Inches	Lbs.	Lbs.		Lbs.
15	TCD1523575C	LT235/75R15	6PR/LRC	18	29.1	9.0	6.0-(6.5)-8.0	37.6	50	104/101Q	1984/1819
	TCD1531105C	31X10.50R15LT	6PR/LRC	17	30.7	10.5	7.0-(8.5)-9.0	47.1	50	109Q	2271
	TCD1533125C	33X12.50R15LT	6PR/LRC	19	32.8	12.5	8.0-(10.0)-10.5	59.6	35	108Q	2205
16	TCD1623585E	LT235/85R16	10PR/LRE	16	31.7	9.3	6.0-(6.5)-7.5	45.4	80	120/116N	3086/2756
	TCD1624575E	LT245/75R16	10PR/LRE	15	30.5	9.5	6.5-(7.0)-8.0	43.9	80	120/116N	3086/2756
	TCD1626575E	LT265/75R16	10PR/LRE	16	31.9	10.1	7.0-(7.5)-9.0	46.5	80	123/120N	3417/3086
	TCD1628575E	LT285/75R16	10PR/LRE	17	33.1	11.3	7.5-(8.0)-9.5	51.9	80	126/123N	3748/3417
17	TCD1723580E	LT235/80R17	10PR/LRE	18	32.0	9.4	6.0-(6.5)-8.0	45.5	80	120/117Q	3086/2833
	TCD1724575E	LT245/75R17	10PR/LRE	18	31.7	9.5	6.5-(7.0)-8.0	45.3	80	121/118Q	3195/2910
	TCD1726570E	LT265/70R17	10PR/LRE	16	31.9	10.9	7.0-(8.0)-9.0	49.7	80	121/118Q	3195/2910
	TCD1728570E	LT285/70R17	10PR/LRE	17	33.0	11.3	7.5-(8.5)-9.5	54.1	80	121/118Q	3195/2910
	TCD1729570E	LT295/70R17	10PR/LRE	17	33.5	11.8	7.5-(8.5)-10.0	58.7	80	121/118Q	3195/2910
	TCD1733125D	33X12.50R17LT	8PR/LRD	19	32.8	12.7	8.5-(10.0)-11.0	55.7	50	114Q	2601
	TCD1735125F	35X12.50R17LT	12PR/LRF	18	34.8	12.7	8.0-(10.0)-10.5	64.1	80	121Q	3195
18	TCD1827565E	LT275/65R18	10PR/LRE	18	32.3	10.9	8.0-(8.0)-9.5	51.2	80	123/120Q	3417/3086
	TCD1827570E	LT275/70R18	10PR/LRE	17	33.4	11.0	7.0-(8.0)-9.0	54.1	80	121/118Q	3195/2190
	TCD1833125F	33X12.50R18LT	12PR/LRF	19	32.8	12.5	8.5-(10.0)-11.0	62.3	80	122Q	3305
	TCD1835125F	35X12.50R18LT	12PR/LRF	18	34.8	12.5	8.5-(10.0)-11.0	66.7	80	128Q	3970
20	TCD2033125F	33X12.50R20LT	12PR/LRF	19	32.8	12.5	8.5-(10.0)-11.0	59.5	80	119Q	3000
	TCD2035125F	35X12.50R20LT	12PR/LRF	18	34.8	12.5	8.5-(10.0)-11.0	66.9	80	125Q	3640
	TCD2037125F	37X12.50R20LT	12PR/LRF	19	36.8	12.5	8.5-(10.0)-11.0	71.7	80	129Q	4080
22	TCD2233125F	33X12.50R22LT	12PR/LRF	19	32.8	12.5	8.5-(10.0)-11.0	58.7	80	114Q	2600
	TCD2235125F	35X12.50R22LT	12PR/LRF	18	34.8	12.5	8.5-(10.0)-11.0	64.7	80	121Q	3195
	TCD2237135F	37X13.50R22LT	12PR/LRF	19	36.8	13.6	9.5-(11.0)-12.0	77.7	80	127Q	3860

■ **AGGRESSIVE TREAD PATTERN**
FOR OPTIMUM TRACTION IN VARIOUS ROUGH TERRAINS

■ **BROAD SHOULDER LUGS**
PROVIDE SHOULDER PROTECTION AND EXTRA BITING EDGES

■ **WIDE CONTACT PATCH**
FOR EVEN WEAR AND GREATER LONGEVITY

■ **STONE EJECTORS**
FOR EFFICIENT CLEAR-OUT

■ **M+S RATED**

STREET PERFORMANCE

6

OFF-ROAD PERFORMANCE

9

QUIET RIDE

6

TOW-MASTER ASC®

ALL-STEEL CONSTRUCTION SPECIAL TRAILER

TOW-MASTER®

ENGINEERED FOR IMPROVED PERFORMANCE AND DURABILITY

- ALL-STEEL BODY CONSTRUCTION PROVIDES DURABILITY UNDER HEAVY LOADS
- STRONG CASING ADDS STRENGTH AND REDUCES TRAILER SWAY

- FIVE-RIB DESIGN FOR BETTER FUEL ECONOMY AND EVEN WEAR
- WIDE GROOVE DECREASE HYDROPLANING AND ROLLING RESISTANCE

- LOW-ROLLING RESISTANCE FOR INCREASED FUEL EFFICIENCY

- SPEED RATED FOR UP TO 81 MPH

- DUAL STEEL BELTS AND REINFORCED BELT-EDGE PACKAGE FOR STRENGTH AND DURABILITY

- VERSATILE FITS A LARGE VARIETY OF BOAT, HORSE, FIFTH WHEELS, CARGO, TRAVEL TRAILERS AND MORE

Greenball's Tow-Master is one of America's most trusted trailer tire. Designed for performance and reliability, the Tow-Master fits a wide range of boat trailers, fifth wheels, toy haulers and more.



15"



16"



TOW-MASTER ASC SPECIAL TRAILER RADIAL

Wheel Diameter	Part Number	Size	Ply Rating	Tread Depth	Overall Diameter	Section Width	Rim Width Range	Weight	PSI	Load Index/Speed Rating	Load Capacity Single/Dual
				32nd/Inch	Inches	Inches		Lbs.	Lbs.		Lbs.
15	THF1522575F	ST225/75R15	LRF	12.0	28.3	8.8	6J	46.2	95	121/117M	3195/2835
16	THF1623580G	ST235/80R16	LRG	11.9	30.8	9.2	6.5J	57.2	110	129/125L	4080/3640
	THF1623585G	ST235/85R16	LRG	11.3	31.7	9.3	6.5J	57.2	110	132/127L	4400/3860

TOW-MASTER SPECIAL TRAILER RADIAL

Wheel Diameter	Part Number	Size	Ply Rating	Tread Depth	Overall Diameter	Section Width	Rim Width	Weight	PSI	Load Index	Load Capacity Single/Dual
				32nd/Inch	Inches	Inches	Inches	Lbs.	Lbs.		Lbs.
13	TR13175C	ST175/80R13	LRC	9	24.0	7	5J	15.5	50	91/87M	1360/1200
14	TR14205D	ST205/75R14	LRD	10	27.1	8	5.5J	21.8	65	105/101M	2040/1820
	TR14215D	ST215/75R14	LRD	10	26.7	8.5	6J	23.4	65	108/103M	2200/1930
15	TR15205D	ST205/75R15	LRD	10	27.1	8	5.5J	23.5	65	107/102M	2150/1870
	TR15225E	ST225/75R15	LRE	10	28.3	8.8	6J	28.0	80	117/112M	2830/2470
16	TR16235E	ST235/80R16	LRE	10	30.8	9.3	6.5J	32.6	80	124/120M	3520/3080
	TR1623585F	ST235/85R16	LRF	10	31.7	9.3	6.5J	37.6	95	128/124M	3960/3250

SPECIAL TRAILER RADIAL AND BIAS TIRE ONLY

TRANSmaster EV[®]

TRANSMaster EV SPECIAL TRAILER RADIAL

Wheel Diameter	Part Number	Size	Ply Rating	Tread Depth	Overall Diameter	Section Width	Rim Width	Weight	PSI	Load Index/Speed Rating	Load Capacity
				32nd/Inch	Inches	Inches	Inches	Lbs.	Lbs.		Lbs.
13	TF13175C	ST175/80R13	LRC	9	24.0	7	5J	15.5	50	91/87M	1360/1200
14	TF14205D	ST205/75R14	LRD	10	27.1	8	5.5J	21.8	65	105/101M	2040/1820
15	TF15205D	ST205/75R15	LRD	10	27.1	8	5.5J	23.5	65	107/102M	2150/1870
	TF15225E	ST225/75R15	LRE	10	28.3	8.8	6J	28.0	80	117/112M	2830/2470
16	TF16235E	ST235/80R16	LRE	10	30.8	9.3	6.5J	32.6	80	124/120M	3520/3080
	TF1623585F	ST235/85R16	LRF	10	31.7	9.3	6.5J	37.7	95	128/124M	3960/3520

SPECIAL TRAILER BIAS

TOW-MASTER SPECIAL TRAILER BIAS

Wheel Diameter	Part Number	Size	Ply Rating	Tread Pattern	Tread Depth	Overall Diameter	Section Width	Rim Width	Weight	PSI	Load Capacity
					32nd/Inch	Inches	Inches	Inches	Lbs.	Lbs.	Lbs.
8	T0856E	4.80-8	LRC	S380	7.0	16.5	4.9	3.75	5.1	90	760

TOW-MASTER SPECIAL TRAILER BIAS

Wheel Diameter	Part Number	Size	Ply Rating	Tread Pattern	Tread Depth	Overall Diameter	Section Width	Rim Width	Weight	PSI	Load Capacity
					32nd/Inch	Inches	Inches	Inches	Lbs.	Lbs.	Lbs.
12	T1222S	22.5X8.00-12	LRF	HT327	10	22.5	8.7	6	21	110	1980

SPECIAL TRAILER BIAS TIRE ONLY

TOW-MASTER SPECIAL TRAILER BIAS

Wheel Diameter	Part Number	Size	Ply Rating	Tread Pattern	Tread Depth	Overall Diameter	Section Width	Rim Width	Weight	PSI	Load Capacity
					32nd/Inch	Inches	Inches	Inches	Lbs.	Lbs.	Lbs.
8	T0864E	5.70-8	LRC	S378	9.0	18.3	5.6	3.75	8.1	75	910
	T0865E	5.70-8	LRD	S378	6.8	18.6	5.5	3.75	8.0	100	1070
12	T1214E	4.80-12	LRC	S378	9.0	20.8	5.0	4.00	8.7	90	990
	T1228E	5.30-12	LRC	S378	9.0	21.9	5.4	4.00	10.1	80	1045

TOW-MASTER SPECIAL TRAILER BIAS

Wheel Diameter	Part Number	Size	Ply Rating	Tread Pattern	Tread Depth	Overall Diameter	Section Width	Rim Width	Weight	PSI	Load Capacity
					32nd/Inch	Inches	Inches	Inches	Lbs.	Lbs.	Lbs.
8	T0874E	18.5X8.50-8	LRC	S368	7.6	18.2	8.4	7.00	11.1	50	940
	T0890E	16.5X6.50-8	LRC	S368	6.6	16.3	6.6	5.375	8.1	70	795
10	T1026E	20.5X8.00-10	LRC	S368	10.0	20.6	7.8	6.00	14.5	50	1105
	T1028E	20.5X8.00-10	LRD	S368	10.0	20.8	7.8	6.00	14.3	70	1330
	T1030E	20.5X8.00-10	LRE	S368	10.0	20.8	7.8	6.00	16.3	90	1535
	T1032E	20.5X8.00-10	LRF	S368	10.0	20.6	7.8	6.00	17.8	110	1735

HIWAY MASTER ST BIAS

Wheel Diameter	Part Number	Size	Ply Rating	Tread Depth	Overall Diameter	Section Width	Rim Width	Weight	PSI	Load Capacity
				32nd/Inch	Inches	Inches	Inches	Lbs.	Lbs.	Lbs.
15	ST15700E	ST205/90D15	LRE	12	29.5	7.9	5.5F	30.9	80	2910/2540
16	ST16750E	ST225/90D16	LRE	12	31.7	8.5	6G	35.1	75	3440/3020

SPECIAL TRAILER BIAS



HIWAY MASTER LPT BIAS

Wheel Diameter	Part Number	Size	Ply Rating	Tread Depth	Overall Diameter	Section Width	Rim Width	Weight	PSI	Load Capacity
				32nd/Inch	Inches	Inches	Inches	Lbs.	Lbs.	Lbs.
14.5	L1459G	9-14.5	LRG	14	28.3	9.9	7	33.9	115	3500



TOW-MASTER LPT BIAS

Wheel Diameter	Part Number	Size	Ply Rating	Tread Depth	Overall Diameter	Section Width	Rim Width	Weight	PSI	Load Capacity
				32nd/Inch	Inches	Inches	Inches	Lbs.	Lbs.	Lbs.
14.5	L1479C	7-14.5 ST	LRF	7.6	26.8	7.6	6	22.5	100	2335
	L1458C	8-14.5 ST	LRG	7.5	27.8	8.0	6	23.0	115	3100

HOMASTER MOBILE HOME BIAS

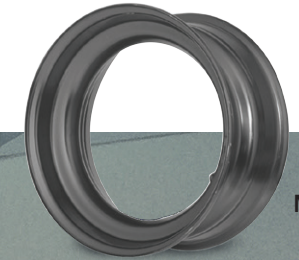
Wheel Diameter	Part Number	Size	Ply Rating	Tread Depth	Overall Diameter	Section Width	Rim Width	Weight	PSI	Load Capacity
				32nd/Inch	Inches	Inches	Inches	Lbs.	Lbs.	Lbs.
14.5	H1436R	8-14.5	LRH	9	26.5	7.5	6	21.7	115	3500
	HLS14GS	215/60D14.5	LRG	9	24.3	8.0	6	22.0	110	3100

BIAS TRAILER ASSEMBLIES

TOW-MASTER BIAS TRAILER ASSEMBLIES - STAMPED WHITE

Wheel Diameter	Part Number	Size	Load Range	Style	Color	Wheel Size	Bolt Pattern	Weight	Load Capacity
						Inches		Lbs.	Lbs.
8	T0874E-W8704W	18.5X8.50-8	LRC	STAMP	WHITE	8X7	4-4	17.1	940
	T0874E-W8705W	18.5X8.50-8	LRC	STAMP	WHITE	8X7	5-4.5	17.1	940

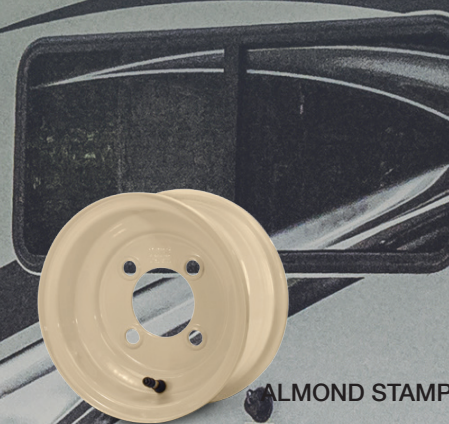
STEEL TRAILER WHEELS



MOBILE HOME

MOBILE STEEL TRAILER WHEEL

Wheel Diameter	Part Number	Size	Color	Style	Bolt Pattern	Center Bore	Offset	Weight	Load Capacity
						Inches	Inches	Lbs.	Lbs.
14	WS600	14.5X6	BLACK	MOBILE HOME	N/A	N/A	0	14	3200



ALMOND STAMPED



WHITE STAMPED

STEEL SPECIAL TRAILER WHEEL - STAMPED

Wheel Diameter	Part Number	Size	Color	Style	Bolt Pattern	Center Bore	Offset	Weight	Load Capacity
						Inches	Inches	Lbs.	Lbs.
8	W0804W	8X3.75	WHITE	STAMPED	4-4	2.81	1.875+1.875	4.5	1075
	W0805W	8X3.75	WHITE	STAMPED	5-4.5	2.81	1.875+1.875	4.3	1075
	W8704W	8X7	WHITE	STAMPED	4-4	2.81	3.5+3.5	6	950
	W8704A	8X7	ALMOND	STAMPED	4-4	2.81	3.5+3.5	6	950
10	WR1065RW	10X6	WHITE	STAMPED	5-4.5	2.81	0	10	1800

For 8"-16" sized wheels that are not listed, please contact our account services department for special order details and instructions.



LAWN AND GARDEN TIRES

ULTRA TURF LAWN AND GARDEN

Wheel Diameter	Part Number	Size	Ply Rating	Tread Depth	Overall Diameter	Section Width	Rim Width	Weight	PSI	Load Capacity
				32nd/Inch	Inches	Inches	Inches	Lbs.	Lbs.	Lbs.
6	G63724S	15X6.00-6	4PR	6.3	14.7	6.1	4.5	5.2	30	570
8	G83716S	16X6.50-8	6PR	6.3	15.7	7.1	5.4	5.2	42	770
	G83746S	18X8.50-8	6PR	7.6	18.0	8.5	7.0	9.9	34	1050
	G83756S	18X9.50-8	6PR	8.2	18.7	9.3	7.0	10.5	36	1320
	G83776S	20X10.00-8	6PR	9.1	19.8	10.3	7.0	13.6	34	1540

LAWN AND GARDEN TIRES



SAWTOOTH LAWN AND GARDEN

Wheel Diameter	Part Number	Size	Ply Rating	Tread Depth	Overall Diameter	Section Width	Rim Width	Weight	PSI	Load Capacity
				32nd/Inch	Inches	Inches	Inches	Lbs.	Lbs.	Lbs.
4	G4424S	4.10/3.50-4	4PR	5	10.4	3.9	2.5	2.3	50	350
6	G6324S	4.10/3.50-6	4PR	5	12.7	3.7	3.2	3.0	50	445



SOFT TURF LAWN AND GARDEN

Wheel Diameter	Part Number	Size	Ply Rating	Tread Depth	Overall Diameter	Section Width	Rim Width	Weight	PSI	Load Capacity
				32nd/Inch	Inches	Inches	Inches	Lbs.	Lbs.	Lbs.
5	G5524S	11X4.00-5	4PR	4	10.5	3.9	2.5	2.9	46	330
6	G6724S	13X5.00-6	4PR	6	12.7	4.5	3.2	3.6	40	440
	G6942S	13X6.50-6	4PR	6	13.1	6.3	4.5	5.2	28	460
	G6562S	15X6.00-6	4PR	6	14.7	6.1	4.5	5.2	30	570
8	G8762S	16X6.50-8	4PR	9	16.2	6.3	5.4	6.3	28	620
	G8832S	18X8.50-8	4PR	9	18.0	8.6	7.0	9.9	22	814
	G8882S	18X9.50-8	4PR	9	18.5	9.0	7.0	12.0	24	1038
	G8514S	20X8.00-8	4PR	8	19.5	8.8	7.0	10.7	22	945
	G8554S	20X10.00-8	4PR	8	20.5	10.2	7.0	12.7	22	1190



STUD LAWN AND GARDEN

Wheel Diameter	Part Number	Size	Ply Rating	Tread Depth	Overall Diameter	Section Width	Rim Width	Weight	PSI	Load Capacity
				32nd/Inch	Inches	Inches	Inches	Lbs.	Lbs.	Lbs.
4	G4224S	4.10/3.50-4	4PR	5	10.6	3.7	2.5	2.4	50	352
6	G6124S	4.10/3.50-6	4PR	5	12.7	3.8	3.7	2.8	50	445

LAWN AND GARDEN TIRES



RIB LAWN AND GARDEN

Wheel Diameter	Part Number	Size	Ply Rating	Tread Depth	Overall Diameter	Section Width	Rim Width	Weight	PSI	Load Capacity
				32nd/Inch	Inches	Inches	Inches	Lbs.	Lbs.	Lbs.
5	G5544S	11X4.00-5	4PR	4	10.6	4.0	3.2	2.8	46	326
6	G6752S	13X5.00-6	4PR	4	12.4	4.6	3.5	3.2	40	440
	G6802S	15X6.00-6	4PR	5	14.4	6.0	4.2	5.0	30	352
8	G8802S	16X6.50-8	4PR	7	16.2	6.7	5.4	5.7	28	620



WHEEL BARROW LAWN AND GARDEN

Wheel Diameter	Part Number	Size	Ply Rating	Tread Depth	Overall Diameter	Section Width	Rim Width	Weight	PSI	Load Capacity
				32nd/Inch	Inches	Inches	Inches	Lbs.	Lbs.	Lbs.
8	G8142S	4.80/4.00-8	4PR	4	15.9	4.3	2.5	2.7	50	484
	G8182S	4.80/4.00-8	4PR	SMOOTH	16	8	2.5	3.0	50	670

GOLF CART TIRES



GREENSAVER PLUS G/T GOLF CART

Wheel Diameter	Part Number	Size	Ply Rating	Tread Depth	Overall Diameter	Section Width	Rim Width	Weight	PSI	Load Capacity
				32nd/Inch	Inches	Inches	Inches	Lbs.	Lbs.	Lbs.
8	G0802	215/60-8	4PR	8.0	18.5	8.8	7	9.6	35	780
10	G1004	205/50-10	4PR	8.0	18.0	8.4	7	11.7	30	675
	G1005	205/65-10	4PR	9.0	20.0	8.3	7	11.8	35	910
12	G1206	205/30-12	4PR	8.6	17.7	7.6	7	9.5	12	465
	G1215	215/50-12	4PR	10.0	20.6	8.4	7	16.3	35	910
14	G1406	205/30-14	4PR	9.0	21.0	7.0	6	11.5	25	925



GOLF CART TIRES



GREENSAVER PLUS G/T PERFORMANCE RADIAL - GOLF CART

Wheel Diameter	Part Number	Size	Ply Rating	Tread Depth	Overall Diameter	Section Width	Rim Width	Weight	PSI	Load Capacity
				32nd/Inch	Inches	Inches	Inches	Lbs.	Lbs.	Lbs.
12	G1207	215/35R12	4PR	8	18.2	8	7	11	10/22	450/700



GREENSAVER SAWTOOTH GOLF CART

Wheel Diameter	Part Number	Size	Ply Rating	Tread Depth	Overall Diameter	Section Width	Rim Width	Weight	PSI	Load Capacity
				32nd/Inch	Inches	Inches	Inches	Lbs.	Lbs.	Lbs.
8	G8852D	18X8.50-8	4PR	8	17.9	8.1	7	10.0	22	815
	G8852R	18X8.50-8	4PR	8	18.0	8.5	7	8.9	22	815

GOLF CART TIRE AND WHEEL ASSEMBLIES

GOLF CART TIRE AND WHEEL ASSEMBLIES									
Wheel Diameter	Part Number	Size	Wheel Style	Wheel Finish	Wheel Size	Bolt Pattern	Load Range	Weight	Load Capacity
					Inches			Lbs.	Lbs.
SAWTOOTH									
8	G8852D-W8704W	18X8.50-8	STAMPED	WHITE	8X7	4-4	4PR	16.1	815
	G8852D-W8705W	18X8.50-8	STAMPED	WHITE	8X7	5-4.5	4PR	16.1	815
	G8852D-W8704A	18X8.50-8	STAMPED	ALMOND	8X7	4-4	4PR	16.1	815
	G8852R-W8704W	18X8.50-8	STAMPED	WHITE	8X7	4-4	4PR	14.9	815
	G8852R-W8705W	18X8.50-8	STAMPED	WHITE	8X7	5-4.5	4PR	14.9	815
	G8852R-W8704A	18X8.50-8	STAMPED	ALMOND	8X7	4-4	4PR	14.9	815
GREENSAVER PLUS G/T									
8	G0802-W8704W	215/60-8	STAMPED	WHITE	8X7	4-4	4PR	15.6	780
	G0802-W8705W	215/60-8	STAMPED	WHITE	8X7	5-4.5	4PR	15.6	780



GREENSAVER PLUS G/T



PARALLAX

ADVANCED TREAD DESIGN FOR SERIOUS OFF-ROADERS

GBC's newest tire, the **Parallax**, features an advanced tread design with deep sipes at the center tread giving these tires serious flex and grip when exploring the off-road. The Parallax also comes equipped with broad shoulder lugs to increase traction in tight spaces and keep constant contact with the ground. Evenly spaced between each of its shoulder lugs are stone ejectors that allow for easy clean-out of debris and build-up, while the extended sidewall design provides protection against sidewall damage and punctures. Are you ready to see what your SXS is truly capable of? Upgrade today to the GBC Parallax and change your view of where an off-road tire can take you.



GBC PARALLAX ATV/UTV TIRES										
Wheel Diameter	Part Number	Size	Ply Rating	Tread Depth	Overall Diameter	Section Width	Rim Width	Weight	PSI	Load Capacity
				32nd/Inch	Inches	Inches	Inches	Lbs.	Lbs.	Lbs.
14	AE143010PX	30x10.00R14	10PR/LRE	19.6	30.0	9.5	7.0	37.1	20	935
	AE143110PX	31x10.00R14	10PR/LRE	20.0	30.0	9.6	7.0	37.6	20	935
15	AE153110PX	31x10.00R15	10PR/LRE	19.6	30.0	9.4	7.0	39.4	20	990
	AE153210PX	32x10.00R15	10PR/LRE	19.6	32.0	9.4	7.0	41.1	20	1050
	AE153310PX	33x10.00R15	10PR/LRE	19.6	33.0	9.4	7.0	44.1	20	1140
	AE153510PX	35x10.00R15	10PR/LRE	20.0	35.0	10.0	7.0	39.9	20	1235

True specifications achieved after mounting for 24-72 hours.

- **STONE EJECTORS**
FOR DEBRIS AND BUILD UP REMOVAL
- **10-PLY RATED**
FOR GREATER LOAD CARRYING CAPACITY

- **HEAVY-DUTY SIPING**
FOR FLEX AND GRIP
- **SIDEWALL LUGS**
FOR PROTECTION AND INCREASED TRACTION IN TIGHT SPACES





TERRA MASTER SQ

BOLD NEW
SQUARE PROFILE

The GBC Terra Master SQ (short for Square) is a bold new redesign of the Industry-leading Terra Master. The SQ features an advanced square shoulder design for a bold new profile differing from the Terra Master. The original stepped tread was replaced with a full tread block non-stepped tread lug, giving the SQ a facelift and helping increase its lifespan. The carcass construction has also been updated from a steel-belted design to a lightweight 10-ply rated nylon construction.



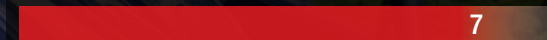
- ADVANCED SQUARE SHOULDER DESIGN
- LIGHTWEIGHT 10-PLY RATED NYLON CONSTRUCTION

- NON-STEPPED TREAD LUGS
- LARGER SIZE OPTIONS UP TO 37X10R17

GENERAL TRAIL RIDING



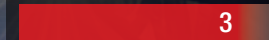
SOFT TERRAIN



ROCKY TRAIL DESERT



DEEP MUD / LOOSE SAND



MUD SURFACE



GBC TERRA MASTER SQUARE SHOULDER ATV/UTV TIRES

Wheel Diameter	Part Number	Size	Ply Rating	Tread Depth	Overall Diameter	Section Width	Rim Width	Weight	PSI	Load Capacity
				32nd/Inch	Inches	Inches	Inches	Lbs.	Lbs.	Lbs.
14	AE143010TMSQ	30X10.00R14	10PR/LRE	15.7	30.0	9.7	7.0	35.2	20/35	935/1310
	AE143210TMSQ	32X10.00R14	10PR/LRE	15.7	31.8	9.7	7.0	40.6	20	1070
15	AE153210TMSQ	32X10.00R15	10PR/LRE	15.7	31.9	9.5	7.0	39.5	20	1050
	AE153310TMSQ	33X10.00R15	10PR/LRE	15.5	32.8	9.6	7.0	42.3	20	1140
17	AE153510TMSQ	35X10.00R15	10PR/LRE	16.6	35.0	9.8	7.0	47	20/25	1235/1435
	AE173510TMSQ	35X10.00R17	10PR/LRE	15.7	34.6	9.9	7.0	48.9	20	1215
	AE173710TMSQ	37X10.00R17	10PR/LRE	15.7	37.2	10.1	7.0	54.7	20	1360

True specifications achieved after mounting for 24-72 hours.

SIDE B

Recommended mounted out for intermediate to hard terrain

SIDE A

Recommended mounted out for soft to intermediate terrain



DIRT COMMANDER 2.0

TAKE COMMAND OF YOUR TERRAIN

The All-New **Dirt Commander 2.0** is GBC's newest SXS tire that features a bold redesign of the popular Dirt Commander. The 2.0 showcases a strong square shoulder profile that maintains grip and bite even during extreme speeds and cornering. Plus, the sidewall protection is even greater than before, courtesy of the elongated sidewall lugs, which enable you to power through tight paths and obstacles with confidence. The flatter profile across the tread face allows maximum acceleration and braking power, even in the most challenging conditions. GBC also redesigned the tread blocks for easier clean-out and added deeper sipes for greater tread flex. The Dirt Commander 2.0 is ready to take on any adventure, from rocky trails and desert driving to soft and intermediate terrains.



It's time to take your ride to the next level with the Dirt Commander 2.0!

GBC DIRT COMMANDER 2.0 ATV/UTV TIRES										
Wheel Diameter	Part Number	Size	Ply Rating	Tread Depth	Overall Diameter	Section Width	Rim Width	Weight	PSI	Load Capacity
				32nd/Inch	Inches	Inches	Inches	Lbs.	Lbs.	Lbs.
12	AER122709DC2*	27X9.00R12	8PR	22	27.9 on 6	8.5	6	28.5	35	1020
	AER122711DC2*	27X11.00R12	8PR	22	28.1 on 8	10.4	8	34.9	35	1230
14	AER142709DC2*	27X9.00R14	8PR	22	28.1 on 6	8.3	6	30.1	35	990
	AER142711DC2*	27X11.00R14	8PR	22	28.6 on 8	10.4	8	34.7	35	1200
	AER142810DC2	28X10.00R14	8PR	23	27.7 on 7	8.9	6.5	36.6	32	1050
	AER142909DC2	29X9.00R14	8PR	22	29.5 on 7	9.1	6.5	32.4	35	1280
	AER142911DC2	29X11.00R14	8PR	22	29.5 on 8	10.7	8	34.1	35	1480
	AER143010DC2	30X10.00R14	8PR	21.5	29.7 on 7	9.5	6.5	37.6	35	1310
15	AER143210DC2*	32X10.00R14	8PR	22	32.7 on 7	9.9	7	40.6	35	1480
	AER153010DC2*	30X10.00R15	8PR	22	31 on 7	9.4	7	38.9	35	1280
	AER153210DC2	32X10.00R15	8PR	23	31.7 on 7	9.6	7	41.1	35	1430
	AER153310DC2	33X10.00R15	8PR	23	32.7 on 7	9.6	7	45.1	35	1520
17	AER153510DC2	35X10.00R15	8PR	23	34.7 on 7	9.9	7	50.3	35	1735
	AER173510DC2*	35X10.00R17	8PR	22	35.1 on 7	9.8	7	51.7	35	1650
	AER173710DC2*	37X10.00R17	8PR	22	37.1 on 7	10.1	7	56.8	35	1870

*Coming Spring 2023

True specifications achieved after mounting for 24-72 hours.

- **RADIAL CONSTRUCTION**
PROVIDES A SMOOTH RIDE
- **BALANCED VOID RATIO**
PROVIDES EXCEPTIONAL GRIP IN ALL TERRAINS
- **SQUARE SHOULDER PROFILE**
FOR MAXIMUM ACCELERATION AND BRAKING POWER
- **LONG SIDE LUGS**
FOR ENHANCED SIDEWALL PROTECTION

GENERAL TRAIL RIDING



SOFT TERRAIN



ROCKY TRAIL DESERT



DEEP MUD / LOOSE SAND



MUD SURFACE





MONGREL SQ

SQUARE PROFILE DESIGN
FOR MAXIMUM GROUND CONTACT

The **GBC Mongrel SQ** is a bold redesign of the original and widely popular Mongrel. The Mongrel SQ features square lugs that extend across the tire tread and down to the sidewall, giving it serious speed and braking power even on today's faster machines. The Mongrel SQ showcases a generous rim guard to help protect against damage and impacts during your adventure. With its closely grouped tread design and beefy lugs, the Mongrel SQ can easily handle hard terrains and wooded areas. The square profile of the Mongrel SQ was designed to keep maximum contact between your vehicle and the road. The large stone ejectors between each shoulder lug help free up stones or other debris, giving you better control and steering responsiveness when you need it most.



GBC MONGREL SQUARE SHOULDER ATV/UTV TIRES

Wheel Diameter	Part Number	Size	Ply Rating	Tread Depth	Overall Diameter	Section Width	Rim Width	Weight	PSI	Load Capacity
				32nd/Inch	Inches	Inches	Inches	Lbs.	Lbs.	Lbs.
14	AM143095MGSQ	30x9.50R14	10PR/LRE	20.5	30.0	9.2	7.0	38.5	20	880
	AM143295MGSQ	32x9.50R14	10PR/LRE	20.5	31.7	9.4	7.0	41.9	20	1020
15	AM153095MGSQ	30x9.50R15	10PR/LRE	20.5	30.1	9.2	7.0	38.7	20	880
	AM153295MGSQ	32x9.50R15	10PR/LRE	20.5	31.7	9.3	7.0	43.9	20	990
	AM153395MGSQ	33x9.50R15	10PR/LRE	20.5	32.8	9.6	7.0	45.1	20	1050
	AM153595MGSQ	35x9.50R15	10PR/LRE	20.5	35.0	9.5	7.0	38.7	20	1170
17	AM173595MGSQ	35x9.50R17	10PR/LRE	20.5	34.8	9.6	7.0	50	20	1140
	AM173795MGSQ*	37x9.50R17	10PR/LRE	TBD	37.0	9.5	7.0	TBD	20	1280

*Coming in Spring 2023

True specifications achieved after mounting for 24-72 hours.

- **SQUARE PROFILE**
FOR MAXIMUM CONTACT BETWEEN YOUR VEHICLE AND THE ROAD
- **LARGE RUGGED SHOULDER LUGS**
FOR FAST ACCELERATION AND BRAKING POWER

- **STONE EJECTORS**
FOR QUICK CLEAN-OUT OF DEBRIS AND BUILDUP
- **RIM GUARD**
FOR ADDED PROTECTION AGAINST DAMAGE

GENERAL TRAIL RIDING

9

SOFT TERRAIN

8

ROCKY TRAIL DESERT

8

DEEP MUD / LOOSE SAND

5

MUD SURFACE

4



TERRA MASTER

CUSTOMIZABLE SETUP FOR MAXIMUM PERFORMANCE

The GBC Terra Master allows you to customize your setup to match the terrain along with your driving style. Featuring two distinct tread patterns, you can alternate sides for better traction in either hard or soft-to-intermediate terrains. The Terra Master's profile is optimized for fierce straight-line traction and its side bite gives you greater cornering control. A lightweight steel-belted carcass provides a strong core, and greater wear resistance without weighing you down.



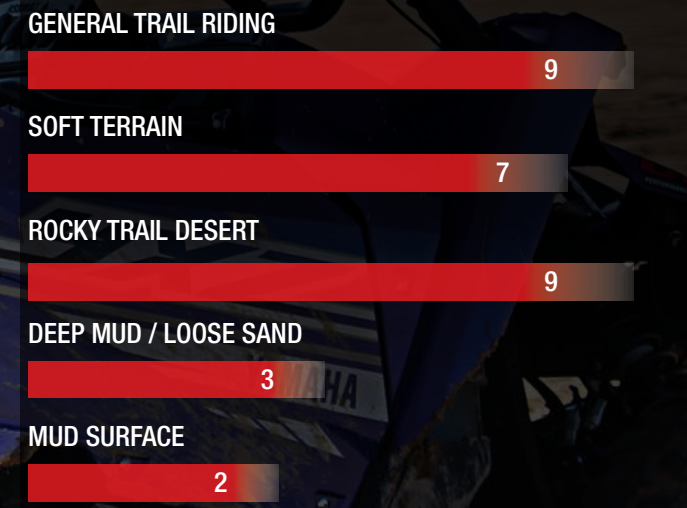
GBC TERRA MASTER ATV/UTV TIRES

Wheel Diameter	Part Number	Size	Ply Rating	Tread Depth	Overall Diameter	Section Width	Rim Width	Weight	PSI	Load Capacity
				32nd/Inch	Inches	Inches	Inches	Lbs.	Lbs.	Lbs.
12	AE122709TM	27X9.00R12	10PR/LRE	17.9	27.2 on 6.0	8.5	6-7	29.3	20	760
	AE122711TM	27X11.00R12	10PR/LRE	17.9	27.4 on 8.0	10.2	7-9	31.0	20	855
14	AE142610TM	26X10.00R14	10PR/LRE	15.6	26 on 7.0	9.5	6-8	27.9	20	740
	AE142709TM	27X9.00R14	10PR/LRE	17.5	27.4 on 6.0	8.5	5-7	29.0	20	715
	AE142710TM	27X10.00R14	10PR/LRE	17.5	27.4 on 7.0	9.5	6-8	29.5	20	785
	AE142711TM	27X11.00R14	10PR/LRE	17.5	27.5 on 8.0	10.2	7-9	31.9	20	855
	AE142810TM	28X10.00R14	10PR/LRE	17.3	28.2 on 7.0	9.3	6-8	31.2	20	855
	AE142910TM	29X10.00R14	10PR/LRE	17.3	28.9 on 7.0	9.3	6-8	33.0	20	880
	AE143010TM	30X10.00R14	10PR/LRE	17.3	30.5 on 7.0	9.3	6-8	35.4	20	935
	AE143110TM	31X10.00R14	10PR/LRE	17.3	31 on 7.0	9.3	6-8	37.2	20	990
15	AE143210TM	32X10.00R14	10PR/LRE	17.3	32.3 on 7.0	9.4	6-8	41.1	20	990
	AE153010TM	30X10.00R15	10PR/LRE	17.3	30.4 on 7.0	9.2	6-8	35.4	20	910
	AE153110TM	31X10.00R15	10PR/LRE	17.3	31 on 7.0	9.4	6-8	37.0	20	990
	AE153210TM	32X10.00R15	10PR/LRE	17.3	32.3 on 7.0	9.5	6-8	39.8	20	1050
	AE153310TM	33X10.00R15	10PR/LRE	17.3	32.9 on 7.0	9.6	6-8	41.1	20	1140
	AE153510TM	35X10.00R15	10PR/LRE	17.4	34.9	9.9	6-8	47.0	20	1235

True specifications achieved after mounting for 24-72 hours.

- **ASYMMETRICAL TREAD PATTERN** FOR DUAL BENEFITS AND PERFORMANCE CHARACTERISTICS
- **STEEL BELTED RADIAL DESIGN** FOR STRONGER CORE AND GREATER WEAR RESISTANCE

- **NON-DIRECTIONAL** FOR EXCELLENT RESPONSIVENESS IN ANY DIRECTION
- **10-PLY RATED CONSTRUCTION** FOR ENHANCED DURABILITY



SIDE B
Recommended mounted out for intermediate to hard terrain

SIDE A
Recommended mounted out for soft to intermediate terrain



MONGREL

CHAMPIONSHIP PROVEN
PERFORMANCE

The **GBC Mongrel** is built to handle today's UTV/SXS that feature greater horsepower and speed capabilities. Sporting 10-ply rated radial construction to support larger max loads and a reinforced sidewall for greater puncture resistance, the Mongrel is ready to overcome the toughest off-road obstacles. Its full coverage tread pattern wraps around the tire creating a rounded profile that increases performance and responsiveness. In addition, the Mongrel's tread promotes self-cleaning to maintain maximum traction in a variety of terrains.



MONGREL ATV/UTV TIRES

Wheel Diameter	Part Number	Size	Ply Rating	Tread Depth	Overall Diameter	Section Width	Rim Width	Weight	PSI	Load Capacity
				32nd/Inch	Inches	Inches	Inches	Lbs.	Lbs.	Lbs.
12	AM122508MG	25X8.00R12	10PR	20	25.3 on 7.0	8.19	5-7	23.7	20	600
	AM122510MG	25X10.00R12	10PR	20	25.3 on 7.0	9.45	6-8	27.0	20	715
	AM122610MG	26X10.00R12	10PR	21	26.4 on 7.0	9.1	6-8	28.6	20	760
	AM122709MG	27X9.00R12	10PR	20	27.3 on 7.0	8.9	6-7	28.7	20	760
	AM122711MG	27X11.00R12	10PR	20	27.4 on 7.0	10.2	7-9	31.4	20	855
14	AM142709MG	27X9.00R14	10PR	20	27.4 on 7.0	8.7	6-7	28.0	20	715
	AM142711MG	27X11.00R14	10PR	19.5	27.6 on 7.0	9.7	7-9	30.8	20	855
	AM142810MG	28X10.00R14	10PR	19.5	28.5 on 7.0	9.1	6-8	31.0	20	855
	AM143010MG	30X10.00R14	10PR	19.5	30.6 on 7.0	9.4	6-8	36.8	20	935
	AM143210MG	32X10.00R14	10PR	19.5	32.5 on 8.0	10.1	6-8	40.7	20	1070
15	AM152810MG	28X10.00R15	10PR	20	28.7 on 7.0	9.3	6-8	29.6	20	825
	AM153010MG	30X10.00R15	10PR	19	30.7 on 7.0	9.0	6-8	37.8	20	910
	AM153210MG	32X10.00R15	10PR	19	32.4 on 7.0	9.6	6-8	41.5	20	1050

True specifications achieved after mounting for 24-72 hours.

■ **AGGRESSIVE TREAD**
FOR SUPERIOR TRACTION

■ **TREAD DESIGNED**
FOR ALL TYPES OF TERRAIN

■ **REINFORCED SIDEWALL**
FOR GREATER PUNCTURE RESISTANCE

■ **10-PLY RATED CONSTRUCTION**
FOR ENHANCED DURABILITY

GENERAL TRAIL RIDING

8

SOFT TERRAIN

7

ROCKY TRAIL DESERT

8

DEEP MUD / LOOSE SAND

4

MUD SURFACE

3



DIRT COMMANDER

TAKE COMMAND OF YOUR TERRAIN

A super-tough, puncture-resistant 8-ply rated bias tire, The **Dirt Commander** offers the perfect lug depth for optimal performance in all types of conditions. The deep-siped tread design offers superior traction that allows the Dirt Commander to tear into rocks, mud, dirt, creek beds, grass, hills, and steep rock ledges. Additionally, mud easily cleans off the Dirt Commander to prevent loss of traction.



GBC DIRT COMMANDER ATV/UTV TIRES

Wheel Diameter	Part Number	Size	Ply Rating	Tread Depth	Overall Diameter	Section Width	Rim Width	Weight	PSI	Load Capacity
				32nd/Inch	Inches	Inches	Inches	Lbs.	Lbs.	Lbs.
12	AE122508DC	25X8.00-12	8PR	27	25.2 on 7.0	8.2	5-7	20.5	7/12	340/480
	AE122510DC	25X10.00-12	8PR	27	25.2 on 7.0	9.5	6-8	25.9	7/12	420/580
	AE122609DC	26X9.00-12	8PR	27	25.7 on 7.0	8.75	6-7	23.7	7/12	410/570
	AE122611DC	26X11.00-12	8PR	27	25.8 on 7.0	10	7-9	27.1	7/12	480/680
	AE122709DC	27X9.00-12	8PR	26	27.7 on 6.0	8.5	6-7	25	20	750/920
	AE122711DC	27X11.00-12	8PR	26	27.8 on 8.0	10.6	7-9	29.3	20	780/960
14	AE142609DC	26X9.00-14	8PR	27	26.0 on 7.0	8.5	6-7	23.4	7/14	700/1000
	AE142611DC	26X11.00-14	8PR	27	26.0 on 7.0	9.7	7-9	28.2	7/14	730/1045
	AE142709DC	27X9.00-14	8PR	27	27.0 on 7.0	8.5	6-7	24.6	20	750/1075
	AE142711DC	27X11.00-14	8PR	27	27.0 on 7.0	10	7-9	29.4	20	780/1120
	AE142909DC	29X9.00-14	8PR	26	29.5 on 6.0	8.5	5-7	28.2	20	925
	AE142911DC	29X11.00-14	8PR	26	29.6 on 8.0	10.4	7-8	33	20	985

GBC DIRT COMMANDER RADIAL CONSTRUCTION (OEM REPLACEMENT)

Wheel Diameter	Part Number	Size	Ply Rating	Tread Depth	Overall Diameter	Section Width	Rim Width	Weight	PSI	Load Capacity
				32nd/Inch	Inches	Inches	Inches	Lbs.	Lbs.	Lbs.
12	AER122709DC	27X9.00-R12	8PR	26	27.24	8.46	6-7	28.60	12	341
	AER122711DC	27X11.00-R12	8PR	26	27.36	10.6	7-9	32.78	14	440

True specifications achieved after mounting for 24-72 hours.

■ SUPER TOUGH AND PUNCTURE RESISTANT

■ DEEP SIPES FOR GREATER TRACTION

■ 8-PLY RATED BIAS CONSTRUCTION

■ BITING EDGES FOR GREATER STABILITY AND CONTROL

GENERAL TRAIL RIDING



SOFT TERRAIN



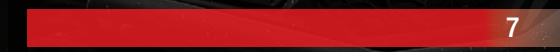
ROCKY TRAIL DESERT



DEEP MUD / LOOSE SAND



MUD SURFACE





GRIM REAPER

- 8-PLY RATED RADIAL CONSTRUCTION
- DEEP WRAP-AROUND LUGS
- SUPERIOR PERFORMANCE IN SOFT TERRAIN
- HIGH RESISTANCE TO PUNCTURES



GRIM REAPER ATV/UTV TIRES

Wheel Diameter	Part Number	Size	Ply Rating	Tread Depth	Overall Diameter	Section Width	Rim Width	Weight	PSI	Load Capacity
				32nd/Inch	Inches	Inches	Inches	Lbs.	Lbs.	Lbs.
12	AE122508GR	25X8.00R12	8PR	27	25.0 on 7.0	8.3	5-7	21.9	7/12	340/480
	AE122510GR	25X10.00R12	8PR	27	25.0 on 7.0	9.4	6-8	25.8	7/12	420/580
	AE122609GR	26X9.00R12	8PR	27	26.0 on 7.0	9.6	6-7	27.1	7/12	440/595
	AE122611GR	26X11.00R12	8PR	27	26.0 on 7.0	10.8	8-9	32.7	7/12	520/735
14	AE142609GR	26X9.00R14	8PR	29	26.2 on 7.0	8.3	6-7	26.5	7/14	700/1000
	AE142611GR	26X11.00R14	8PR	29	26.2 on 8.0	10.7	7-9	31.5	7/14	730/1045
	AE142709GR	27X9.00R14	8PR	29	27.0 on 7.0	9.0	6-7	27.9	7/14	750/1075
	AE142711GR	27X11.00R14	8PR	29	27.0 on 7.0	10.4	7-9	32.6	7/14	780/1120

True specifications achieved after mounting for 24-72 hours.



XC-MASTER

- X-KNOB TREAD FOR SUPERIOR HANDLING AND CONTROL
- DURABLE PUNCTURE RESISTANT CASING TO TAKE ON THE TOUGHEST TERRAINS
- GBC'S MOST POPULAR X-COUNTRY TIRE



GBC XC-MASTER ATV TIRES

Wheel Diameter	Part Number	Size	Ply Rating	Tread Depth	Overall Diameter	Section Width	Rim Width	Weight	PSI	Load Capacity
				32nd/Inch	Inches	Inches	Inches	Lbs.	Lbs.	Lbs.
9	AR092011XM	20X11.00-9	6PR	15	20.0 on 9.0	11.0	7-9	16.9	7	341
	AR092211XM	22X11.00-9	6PR	15	22.0 on 9.0	11.2	7-9	19.8	7	397
10	AR102011XM	20X11.00-10	6PR	15	20.0 on 8.0	10.8	7-9	17.6	5	330
	AR102107XM	21X7.00-10	6PR	15	21.3 on 5.5	7.0	3.5-5.5	12.0	7	235
	AR102207XM	22X7.00-10	6PR	15	22.0 on 5.5	6.9	3.5-5.5	13.7	7	255
	AR102211XM	22X11.00-10	6PR	15	22.4 on 8.0	10.8	7-9	19.2	7	386
	AR102307XM	23X7.00-10	6PR	15	23.0 on 5.5	7.0	3.5-5.5	13.8	7	275

True specifications achieved after mounting for 24-72 hours.

GROUND BUSTER III

- DESIGNED FOR INTERMEDIATE TO HARD TERRAIN
- 6-PLY RATED VERSION FOR GREATER PUNCTURE RESISTANCE
- ENDORSED BY TOP GNCC ATHLETES



GBC GROUND BUSTER III ATV TIRES

Wheel Diameter	Part Number	Size	Ply Rating	Style	Tread Depth	Overall Diameter	Section Width	Rim Width	Weight	PSI	Load Capacity
					32nd/Inch	Inches	Inches	Inches	Lbs.	Lbs.	Lbs.
9	AR092011GBC	20X11.00-9	6PR	REAR/BLUE HOT PATCH	16.0	19.45	11.08	9	15.25	7	340
	ARGBC9201106	20X11.00-9	6PR	REAR PRO	14.0	19.76	11.44	9	15.25	7	340
	ARGBC9211106	21X11.00-9	6PR	REAR	14.0	20.75	11.42	9	17.2	7	364
10	ARGBC1021706	21X7.00-10	6PR	FRONT	15.0	20.79	6.85	5-6	11.2	7	234
	ARGBC1022706	22X7.00-10	6PR	FRONT	15.0	21.77	6.89	5-6	12.1	7	254

True specifications achieved after mounting for 24-72 hours.

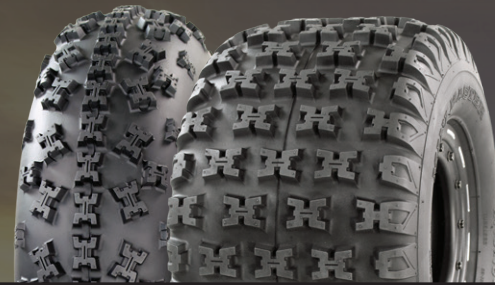


MINI MASTER

BATTLE BORN



- ENGINEERED FOR MINI ATV XC AND ATV MX APPLICATIONS
- X-TYPE LUG FOR BETTER HOOK UP AND TRACTION
- SOFT YET DURABLE COMPOUND TO HELP CONFORM TO SURFACES AND TERRAINS



MINI MASTER ATV TIRES

Wheel Diameter	Part Number	Size	Ply Rating	Tread Depth	Overall Diameter	Section Width	Rim Width	Weight	PSI	Load Capacity
				32nd/Inch	Inches	Inches	Inches	Lbs.	Lbs.	Lbs.
8	AE081808MM	18X8.00-8	2PR	15	18	8.3	7	11.5	5	182
	AE081810MM	18X10.00-8	4PR	15	18	10	8	12.9	10	210
10	AE101906MM	19X6.00-10	2PR	11	19	6.1	5	9.1	5	148
	AE102006MM	20X6.00-10	4PR	11	20	6.1	5	9.4	10	235

True specifications achieved after mounting for 24-72 hours.



GBC BATTLE BORN ATV/UTV TIRES

Wheel Diameter	Part Number	Size	Ply Rating	Tread Depth	Overall Diameter	Section Width	Rim Width	Weight	PSI	Load Capacity
				32nd/Inch	Inches	Inches	Inches	Lbs.	Lbs.	Lbs.
10	AE102307BB	23X7.00-10	4PR	15	22.8	6.8	5.0	13.5	7	275
	AE102308BB	23X8.00-10	4PR	15	23.0	7.8	6.0	13.8	7	310

True specifications achieved after mounting for 24-72 hours.

Designed for YOUTH UTV/SXS

- DIRECTIONALLY DESIGNED GROOVED X-KNOBS FOR FRONT AND REAR APPLICATIONS
- FRONT TIRE ENGINEERED FOR OPTIMAL HANDLING AND CONTROL
- REAR TIRE ENGINEERED FOR OPTIMAL DRIVE AND BRAKING

MINI MONGREL

Designed for YOUTH UTV/SXS

- AGGRESSIVE TREAD FOR MAXIMUM TRACTION IN A VARIETY OF TERRAINS
- NARROWER FRONT ENGINEERED FOR OPTIMAL HANDLING
- REAR SIZE OFFERS WIDER CONTACT PATCH FOR IMPROVED DRIVE POWER



GBC MINI MONGREL ATV/UTV TIRES

Wheel Diameter	Part Number	Size	Ply Rating	Tread Depth	Overall Diameter	Section Width	Rim Width	Weight	PSI	Load Capacity
				32nd/Inch	Inches	Inches	Inches	Lbs.	Lbs.	Lbs.
10	AM102307MJ	23X7.00-10	6PR	15	22.9	6.9	3.5-5.5	16.4	7	275
	AM102308MJ	23X8.00-10	6PR	15	22.9	8.0	5.0-7.0	17.7	7	310

True specifications achieved after mounting for 24-72 hours.





DIRT DEVIL

- ECONOMICAL UPGRADE
- GREAT TRACTION IN VARIOUS TERRAINS
- WIDE RANGE OF POPULAR SIZES

DIRT DEVIL ATV/UTV TIRES

Wheel Diameter	Part Number	Size	Ply Rating	Tread Depth	Overall Diameter	Section Width	Rim Width	Weight	PSI	Load Capacity
				32nd/Inch	Inches	Inches	Inches	Lbs.	Lbs.	Lbs.
8	AR0898	22X11.00-8	6PR	20	22.3 on 8.5	10.9	7-9	21.5	7	395
9	AR0937	22X11.00-9	6PR	20	22.5 on 8.0	10.8	7-9	21.6	7	395
	AR0938	25X12.00-9	6PR	20	25.2 on 9.5	11.6	8-10	23.9	7	496
10	AR1028	22X8.00-10	6PR	20	21.9 on 5.5	8	5-7	14.2	7	275
	AR1018	22X11.00-10	6PR	20	22.2 on 9.0	10.7	7-9	19.9	7	385
	AR1029	23X8.00-10	6PR	20	23.4 on 5.5	8.3	5-7	15.4	7	300
	AR1060	24X11.00-10	6PR	20	24.0 on 8.0	11.1	7-9	22.3	7	440
11	AR1068	25X12.00-10	6PR	20	24.8 on 9.0	11.7	8-10	24.9	7	495
	AR1160	23X8.00-11	6PR	20	23.4 on 7.0	7.6	5-7	14.5	7	290
	AR1104	24X8.00-11	6PR	20	24.0 on 7.0	8.1	5-7	17.4	7	320
	AR1103	24X9.00-11	6PR	20	23.8 on 7.0	8.6	6-7	19.1	7	365
	AR1161	24X10.00-11	6PR	20	24.2 on 7.0	10.1	6-8	21.4	7	395
12	AR1165	25X10.00-11	6PR	20	25.2 on 7.0	10	6-8	23.1	7	430
	AR1228	25X8.00-12	6PR	20	25.2 on 7.0	8.3	5-7	19.3	7	340
	AR1230	25X10.00-12	6PR	20	24.4 on 7.0	9.9	6-8	20.2	7	420
	AR1201	26X10.00-12	6PR	39	25.9 on 7.0	9	6-8	24.4	7	460

True specifications achieved after mounting for 24-72 hours.



UTV/ATV TIRES GBC TIRE PERFORMANCE CHART

TIRE	SPORT ATV	UTILITY ATV	UTV/ SXS	ROCKY TRAIL/ DESERT	GENERAL TRAIL/ RIDING	SOFT TERRAIN	DEEP MUD	DUNES/ LOOSE SAND	X-COUNTRY RIDING	MX CLOSED COURSE	STREET/ HARD SURFACE
GRIM REAPER											
DIRT DEVIL											
XC-MASTER											
MINI MASTER											
GROUND BUSTER III											
MINI MONGREL											
BATTLE-BORN											

EXCEPTIONAL PERFORMANCE VERY GOOD PERFORMANCE



NOTES

TERMS & CONDITIONS

- 1. Payment:** Net 30 days from invoice date on approved credit.
- 2. Shipments:** Shipments under 3000 lbs. will be freight collect.
- 3. Shipments:** Over 3000 lbs. to one location will be freight prepaid.* Any additional drop-off charge for multiple location shipments will be prepaid, with drop off charges added to the invoice.
- 4. Returns:**
 - a) No returns will be accepted unless issued a Return Authorization Number by Greenball Corporation. Material returned without authorization will not receive any credit.
 - b) Returns must be received within ten (10) days of receipt of shipment. Customer must ensure that returned products are packaged and returned in their original condition.
 - c) Non-defective material will incur a 20% restocking fee.
 - d) Special orders and discontinued items cannot be returned.
 - e) No credit can be issued until Greenball Corporation inspects returned product. Credit will be issued at original invoice price only.
- 5. Claims:** Shortage claims, error or defect in shipment must be made within 72 hours of receipt of goods. Claims for damage or loss in transit must be made directly with the carrier.
- 6. Prices:** Prices and terms subject to change without notice.
- 7. FedEx Special Handling Charge:** Oversized orders will be charged a \$7.00 additional handling fee from our standard rate.

*Weight minimum for freight prepayment subject to change due to outside (external) influences. You may confirm minimum weight with any customer service personnel.

WARNING

Tire Mounting can be dangerous if not done by trained personnel using proper tools and equipment. For your own safety, seller recommends that users have tires and inner tubes changed by an experienced service provider.

Greenball Corporation strives to ensure the accuracy of all information contained in this catalog. However, misprints, inaccuracies, omissions and other errors may occur. Greenball Corporation does not take responsibility for any errors, misprints, omissions or any other inaccuracies found herein; including but not limited to product information specifications or item availability. All Greenball brand tires are subject to continuous development and design. Greenball Corporation reserves the right to change construction, materials, or specifications without notice of obligation.

LIMITED WARRANTY

Greenball Corporation warrants its products, to the original purchaser only, against failure due to factory defective materials and workmanship for four years from the date of manufacture, or two years from invoice date of purchase verified by the original invoice or copy thereof. All request for claims and tire inspections must be submitted through the proper Greenball Corporation Warranty channels.

*For Tow-Master® Radial series, please see Tow-Master® Radial warranty pamphlet for complete information.

Greenball Corporation makes no expressed claims of expected tire wear. Variables that affect tire wear include but not limited to driving/riding conditions, load and pressure, under/over inflation and improper mounting.

*Other limitations and exceptions apply. Please contact a Warranty Specialist for complete information.

What is not covered by the Warranty?

- Greenball Corporation does not pay for mounting, balancing, or labor. Greenball Corporation does not cover loss of time, inconvenience, loss of use of vehicle, costs of towing or transportation or consequential damages of any nature.
- Tires/wheels which have been patched, plugged or repaired or on to which liquid balancers or sealants have been applied. Patching, repairing of tires, or applying any sealants on tire will automatically VOID any warranty.
- Failure, damage or irregular wear caused by misalignment or any other mechanical causes.
- Failure, damage or irregular wear caused by driving in violation of SPEED, LOAD, or TEMPERATURE RATINGS.
- Failure due to fire, accident, malicious mischief, improper inflation, improper use, running flat, overloading or road hazards. Examples of road hazards include nails, glass and other foreign objects and natural/man-made defects or obstacles such as excavations, construction, potholes and chuckholes. Damages caused by road hazards include cuts snags, punctures, scuffs, carcass bruises and impact breaks.
- Premature or irregular wear due to improper inflation or alignment.
- Tires used in racing or competition.

For questions or to file a claim, please contact our Warranty Specialists at 1-866-767-9637. Please see our warranty brochure for complete information.

To register your tires please visit www.greenball.com/support/tire-registration